

Gender and Inclusion in Forest Landscape Restoration

In this self-paced online course, you will learn the fundamentals of gender and social inclusion in forest landscape restoration (FLR). The course focuses on gender inequalities, gender-differentiated impacts and opportunities to address inequalities for more equitable and sustainable FLR, to build the abilities and understanding of diverse stakeholders on the gender and FLR nexus.



Why gender matters in FLR

Women's access and rights to forest, tree and other natural resources are often insecure, and in many instances, women's participation in decision-making regarding the management of these resources is limited. Due to socially constructed gender roles and relations, women and men engage differently with forest and tree-based resources. As a consequence, their environmental knowledge, needs and priorities often differ. Gender-unequal institutions include discriminatory state policies, customary practices, and market systems.

While advancing gender equality is first and foremost an issue of human rights, gender inequality has also proven a major barrier to reaching environmental sustainability goals. Hence, a lack of attention to gender by policy makers and practitioners risks both failing to meet environmental targets while reinforcing inequality and causing adverse impacts for women. On the flip side, evidence suggests that carefully drafted gender-responsive policies and interventions can help generate more equal gender relations in forested landscapes.

The United Nations General Assembly declared 2021-2030 as the UN Decade on Ecosystem Restoration, a universal call for the protection and revival of ecosystems around the world for the benefit of people and nature. Key to achieving the goals of the UN Decade on Restoration is recognising and addressing gender and social inclusion across various restoration contexts, including FLR efforts. **The aim of the course is to build knowledge and capacity of stakeholders to better integrate gender and social inclusion considerations in restoration efforts, thereby contributing to more sustainable, equitable and inclusive restoration outcomes.**

The course at a glance

- Course type:** Self-paced certified e-learning course that is mobile accessible
- Access:** Online and offline access to complete in your own time
- Interactive learning:** Videos, quizzes and learning exercises
- Language:** English
- Duration:** 5 modules at approx. 40 minutes per module, 3 hours in total
- Certification:** for individual modules and/or for entire course

Target audience and value of the course

Government representative:

As a government policy- and decision-maker, my main focus is the cross-cutting nature of FLR in meeting climate and environment goals in the sustainable development agenda. I am interested in learning how women's empowerment and gender equality can be mainstreamed in FLR for enhanced outcomes toward these goals and the 2030 Agenda.

FLR practitioner:

I work on a range of FLR issues, from conducting research, to community engagement and capacity building, and implementing restoration in practice. I know gender needs to be integrated in these processes and want to make sure it is, but I need more knowledge and tools to build my understanding of the how to do that, to achieve better project outcomes.

FLR programme developer:

I work as a project designer and manager in a development agency. I am often tasked with including gender considerations and activities in projects. I want to be able to integrate a gender-responsive approach throughout the project cycle.

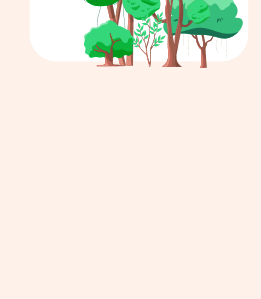
NGOs and grassroots organizations:

I work with local initiatives, grassroots and community organizations to advocate for local stakeholders while coordinating with restoration projects.

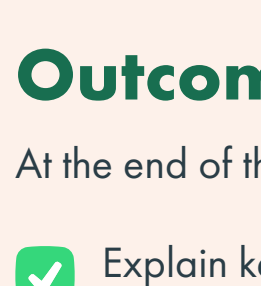
Gender specialists:

I work on a range of projects for governments and organizations. I know gender-differentiated issues and inequalities exist, but want to learn more and/or be able to teach about the nexus of gender and FLR, and the specific challenges and opportunities in adopting a gender-responsive approach.

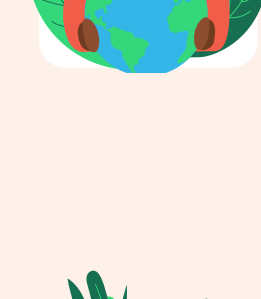
Course highlights and outcomes



Gain the skills needed to understand key gender related concepts and to understand how gender and social inclusion link to restoration



Join a community-of-practice committed to ensuring gender and social inclusion is at the heart of forest and landscape restoration efforts



Explore rich learning materials, diving into detailed content within the resource centre based on your needs



Learn how to incorporate gender and social inclusion into your restoration work through access to additional information and resources on concepts, frameworks, tools and good practice examples

Outcomes

At the end of the course, participants will be able to:

- ✓ Explain key concepts related to FLR, gender, and their interlinkages.
- ✓ Unpack why and how addressing gender equality is relevant to restoration.
- ✓ Identify and elaborate opportunities to integrate gender equality considerations within restoration initiatives.
- ✓ Access additional information and resources on concepts, frameworks, tools and good practice examples.



Course structure

The Gender and Inclusion in Forest Landscape Restoration (FLR) e-learning course consists of five modules, each approximately 40 minutes long, that address key definitions around gender and inclusion and provide practical tips to ensure gender-responsive and inclusive policies and interventions. Each module can be completed on its own, or the course can be completed in its entirety over approximately 3 hours.

module 1 The Basics: Gender Equality

- Key gender terms and concepts

module 2 Forest Landscape Restoration and Gender

- What are restoration and FLR?
- FLR and gender
- Key historic events related to gender and FLR in the international agenda

module 3 A Gender-Responsive Approach to FLR: Concepts and Safeguards

- Conceptualising a gender-responsive approach to FLR

module 4 A Gender-Responsive Approach to FLR: Decision-making and Distribution

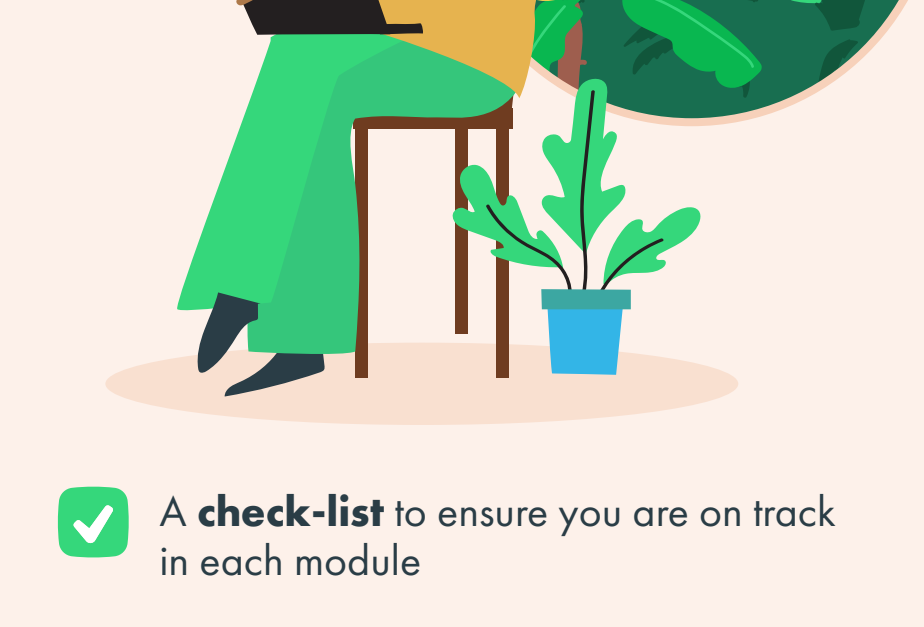
- Equitable decision-making
- Equitable distribution of costs and benefits

module 5 Taking Action: Implementing Gender-Responsive FLR

- Gender mainstreaming across the project cycle
- Stakeholders

What the course offers

- ✓ **Specialised content geared for multiple stakeholders** across research, practice and policy linked to forest and landscape restoration and gender thematic work
- ✓ **Application examples** and case studies from around the globe included within the module content
- ✓ Access to an **extensive resource centre** with videos, readings, and webinars linked to gender and FLR
- ✓ **Offline access** to the course, so that you can complete it in your own time
- ✓ A **mobile-friendly platform**, allowing for access from your computer or phone



- ✓ A **check-list** to ensure you are on track in each module
- ✓ **Quizzes and learning exercises** as you progress through the course
- ✓ A **certificate** upon successful completion of each module and/or the whole course

Background to the course development

The **CGIAR Research Program on Forests, Trees and Agroforestry (FTA) (2011-2021)** was the world's largest research for development program to enhance the crucial role of forests, agroforestry and tree resources across the landscape and along value chains, towards the overarching objectives of sustainable development, food security and nutrition, and to address climate change.

FTA brought together more than 200 scientists and developed, provided and promoted evidence-based technical, policy and institutional solutions and innovations for farmers, foresters, practitioners, value chain actors and policy makers.

While advancing gender equality is first and foremost an issue of human rights, gender inequality has also proven a major barrier to reaching environmental sustainability goals. FTA has enhanced **generating knowledge to invest in our understanding of the ways in which gender relations – often in combination with other social relations – influence differentiated perceptions, needs, costs, benefits and impacts associated with landscape restoration.** It has developed and tested innovations that can advance gender equality in forest and agroforestry landscapes.



As restoration efforts at global, national and local levels are ramped up to tackle multiple ecological and development challenges, there is an urgent need to ensure that decision-makers and implementers are informed by such evidence, to mitigate adverse impacts and ensure that restoration efforts contribute to the wellbeing and empowerment of both women and men.

This course brings together many of the learnings and evidence generated during ten years of FTA research and innovation as well as other key resources related to gender and inclusion in FLR.

OPEN ACCESS

Access and sign up for the **Gender and Inclusion in Forest Landscape Restoration e-learning course** <https://www.foreststreesagroforestry.org/gender-and-inclusion-in-forest-landscape-restoration/>