



# **Policies and Directions for Primary Forest Conservation in Lao. PDR**

## **Online Expert Workshop: Road map for Primary Forests Conservation in Asia-Pacific**

23-25 March 2021

**Prepared by:**

**Mr. Vongvilay Vongkhamsao (FRC/NAFRI/MAF, Laos)**

**E-mail: [vongvilay7566@gmail.com](mailto:vongvilay7566@gmail.com)**

# Contents

---

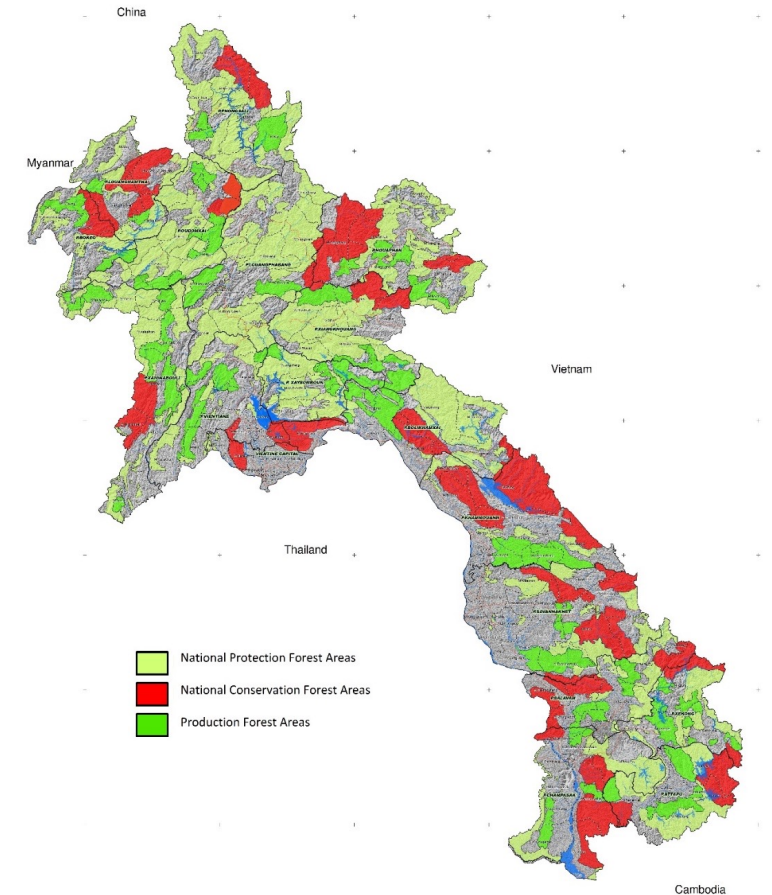
- National policies relate to Forestry
- Key achievements and challenges on policies implementation
- Future Directions for sustainable forest Management.

# Statistics data & information on forestry

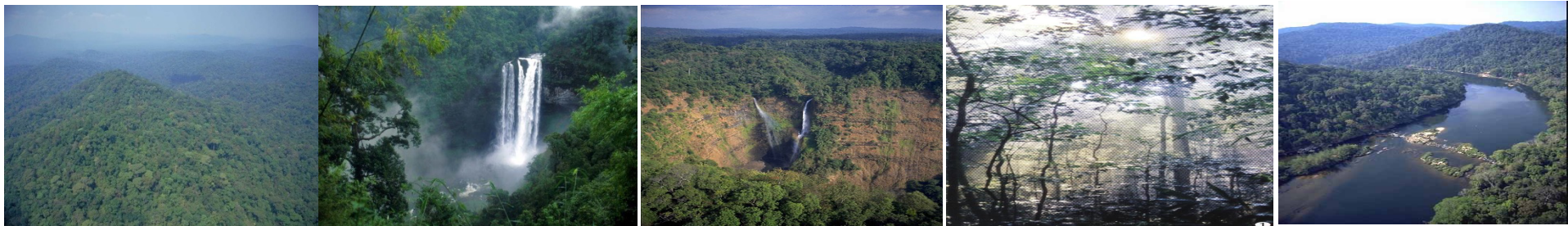
8<sup>th</sup> NSEDP recognized that forests are vital for sustainable Socio-economic development as GoL Adopted Green Growth Development Policy.

**Target by 2020:** Total forest areas: ~16.5 (70%)

- **Protection Forest:** 8.2 million ha;
- **Conservation Forest:** 4.7 million ha;
- **Production Forest:** 3.1 million ha;
- **Plantation Forest:** 0.5 million ha.



Three Categories of Forest Areas in Lao PDR



# List of Laws, Decrees and Strategy

Category	Reference	Date of Issue
<b>Forestry Strategy 2020</b>	<b>MAF</b>	<b>17 July 2005</b>
<b>Ordered Sustention of Timber Export</b>	<b>PMO # 15</b>	<b>13 Dec 2016</b>
Ordered Suspension of Logging Forest Product	PMO # 31	5 Nov 2013
Conservation Forest Decree	Government Decree # 134	13 May 2015
Protection Forest Decree	PMO # 333	19 July 2010
Production Forest Decree	PMO # 59	2 Dec 2002
<b>Forestry Law ( Revised version)</b>	<b>NA # 8</b>	<b>13 June 2019</b>
Agricultural Law	NA # 1	10 Oct 2010
Fisheries Law	NA # 3	9 Jun 2009
Irrigation Law	President Issue # 003	17 Jun 2013
Environmental Protection Law	President Issue # 026	24 Dec 2017
Water and Water Resources Law	NA # 05	11 Oct 1996
<b>Land Law</b>		<b>Jun 2019</b>

# National Forestry Policy Development

## Forest law and regulations

1. Law on Land No. 04/NA, dated 21/10/2003 :Article 17, 21 state that in each family with workforce member is eligible to receive no more than 3 ha of forestry land per 1 labour.

2. Law on Forestry No. 08/NA.2019, dated 13/06/2019, Article 66 – types of forestry land use.

3. Investment Promotion Law No. 02/NA, dated 08/7/2009.

4. Decree of Prime Minister Office (sapa lattamonti) No. 186/NA, dated 12/1/1994 regarding land-forest allocation to plant and protect trees

5. Minister Decree No. 96/PM, dated 11/6/2003 regarding commercialization of forestry plantation and environmental protection.

6. Minister Instruction Order No. 03/PM, date 25/6/1996 regarding continuation and dissemination of activities on land allocation-handover of land and forest land.

# National Forestry Policy Development

## Forest law and regulations

7. MAF instruction order No.1849/MAF, dated 7/10/1999 regarding registration of forest plantation.

9. MAF Instruction/Guideline No. 0822/MAF, dated 2/8/1996 regarding management of forestry plantation and planting forest.

8. PMO 09- on Management of land concession by investors for industrial tree plantation and crops in Laos , dated 02 July 2018.

10. PMO13 - moratorium on new concession licensing.

12. Lao National Green Growth Strategy 2030

- Increase efficiency, effectiveness , suitability of use NR
- Reducing economic risks & vulnerability
- Reducing pollution, wastes & green house gas emission

11. Prime Ministerial Order No.15 (PMO 15) banning the export of unfinished products made from wood harvested from natural forests

# National Policies on forestry in Laos

Lao National Green Growth Strategy 2030

## Focus areas:

- i. Improve of environment & management of investment
- ii. Rural Development & Poverty Reduction
- iii. Gender role/Protection & Promotion of the advance of women.
- iv. Climate Change adaptation & natural disaster management.

## Focus sectors:

1. Natural resources & environment
2. Agriculture & Forestry
3. Industry & Commerce
4. Public work & Transport.
5. Electricity & mine
6. Information, Culture & Tourism
7. Science & Technologies



# Key achievement of policies implementation

- Based on inventory 2019 , Forest coverer was 62 %, increased 4% within 4 years period ( 2015-2019).
- Completed Management and Development plan on 3 forest categories at the basic:
  - Identified and established 174 Conservation forest areas , including 24 National sites with total areas of 4.8 million hectares
  - Identified and established 139 Protection forest with total 7.9 million hectares
  - Established 51 production forest with total 3.1 million hectares





# Key achievement of policies implementation

- Three conservation forest have been approved /accepted as National parks, proposed one conservation area to be world natural heritage site and other one to be ASEAN Heritage site.
- Tree plantation and forest restoration have been promoted to increase forest cover and reduce pressures from natural forest resources. 500,000 ha of forest plantation have been established.
- Since Govt. issued PMO/15 on banning export of unfinish forest products from natural Forest. The numbers of illegal forest land occupations, illegal loggings and transportation have been decreased dramatically (nearly 70% ).



# Overall Challenges:

- Conversion of forest area to other land uses: agriculture plantation, commercial tree plantation, resettlement, infrastructure construction, mining and other socio-economic development
- Unclear resource and land tenure :  
Incomplete land use planning
- Coordination among sectors : Central & Local on land approval
- Law enforcement and governance.



# The Future Directions for increasing Forest Cover

**Based on FS 2020, the Plan sets a major target to increase forest cover at 70% of by 2030 by focussing on major areas:**

1. Maintain and improve the quality of current forests,
2. Restore degraded forests both inside and outside the three forest categories.
3. Support the expansion industrial tree plantations for sustainable market supplies.
4. Preserve endangered plants and wildlife species including their unique habitats,
5. Establish a fair benefit sharing mechanism for forest resources management,
6. Strengthen Forest law Enforcement and Governance (FLEG).
7. Participatory land use planning at the village level with focus on agro-ecological zoning.
8. Policy reforms and strengthening of interagency cooperation .