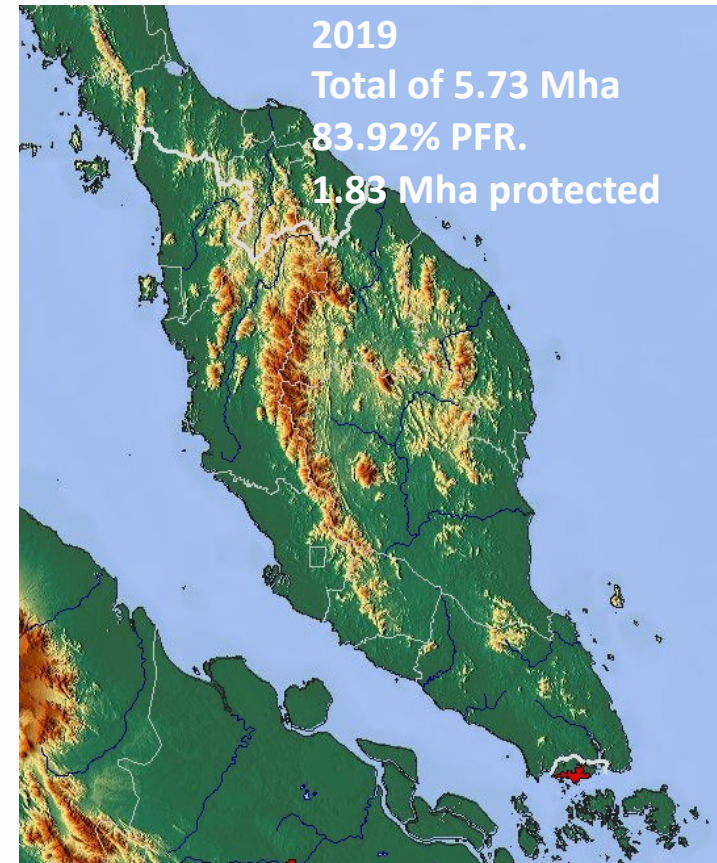
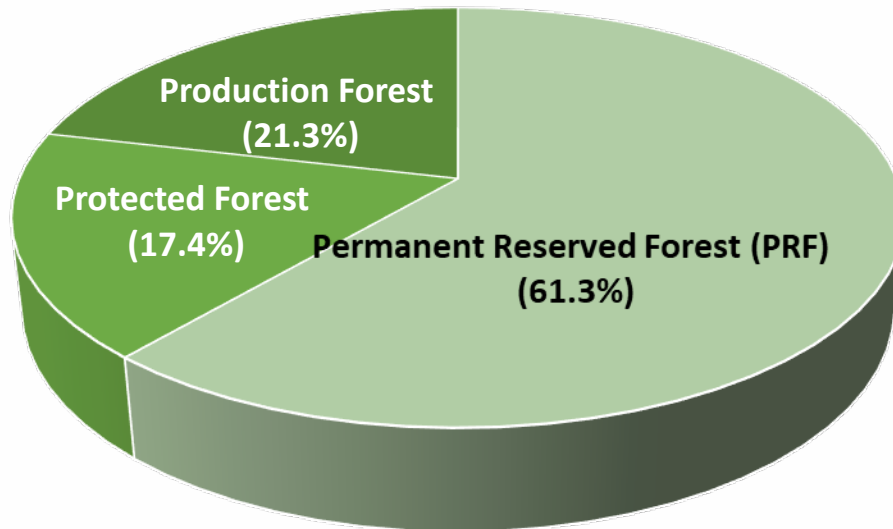


Geospatial technology for identifying and mapping priority areas of primary forest for conservation in Malaysia

Kasturi Devi Kanniah
TropicalMap Research Group
Centre for Environmental Sustainability and Water Security
Fac. Built Environment & Surveying
Universiti Teknologi Malaysia
23 March 2021

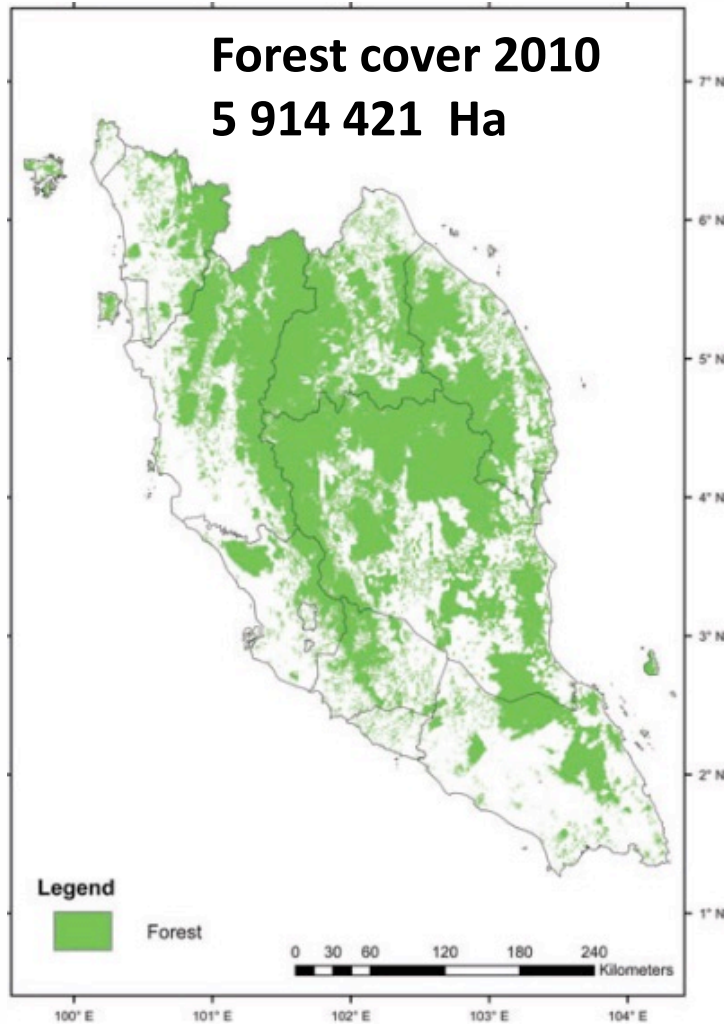
Forest cover in Malaysia

Total forests in 2016- 18.24 Mha (FAO, 2020)



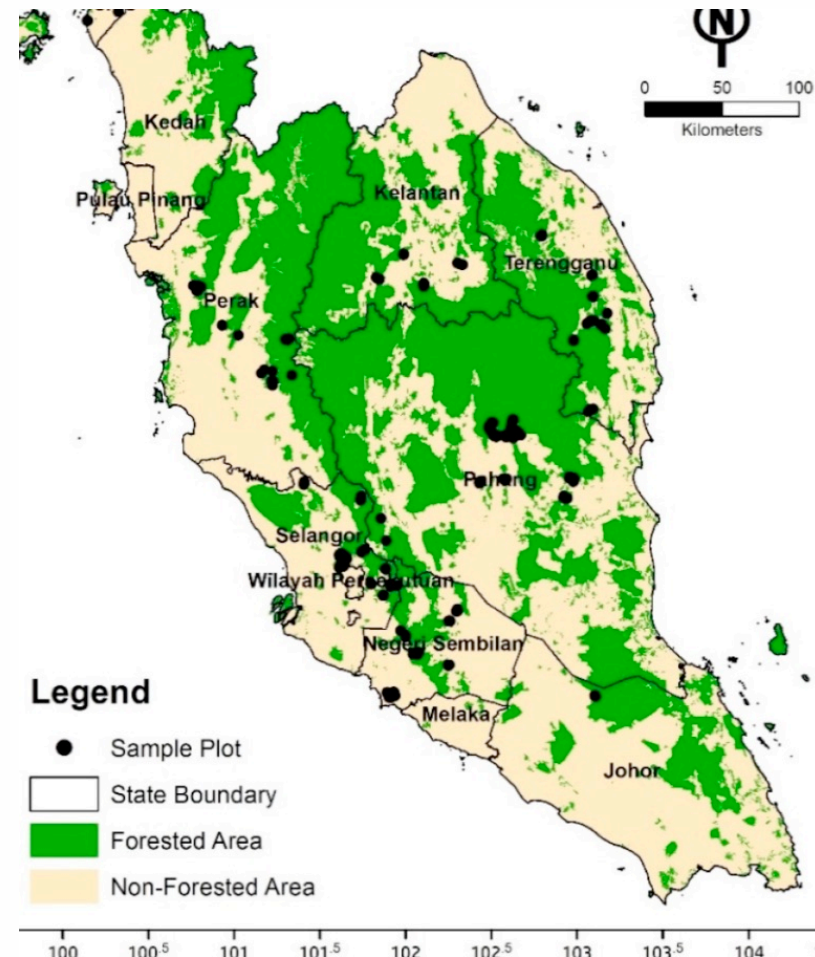
1,086,000 Ha of the tropical rainforests are classified as primary/virgin forests (FAO, 2020)
 PRF decreased from 4.91 Mha in 2011 to 4.81 Mha in 2019

Mapping forest cover extent



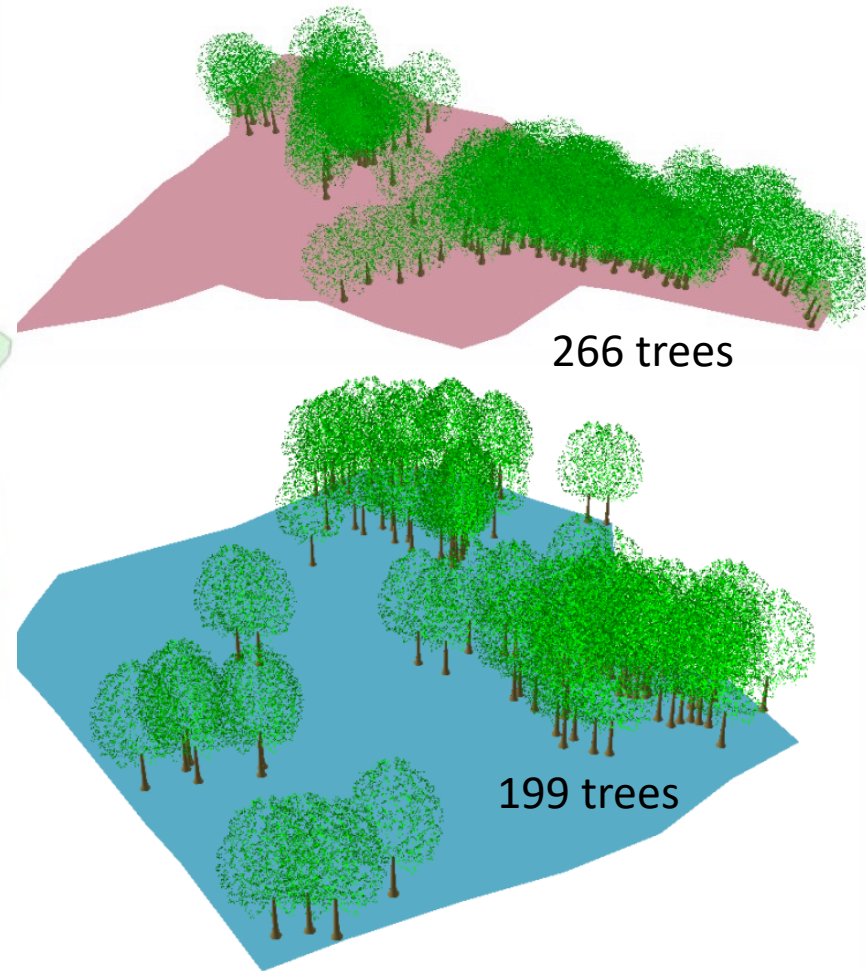
Source: Mohd Najib and Kanniah, 2019

Forest cover 2016
5,895,810 Ha



Source: Omar et al., 2017

Conservation of *Hopea subalata*

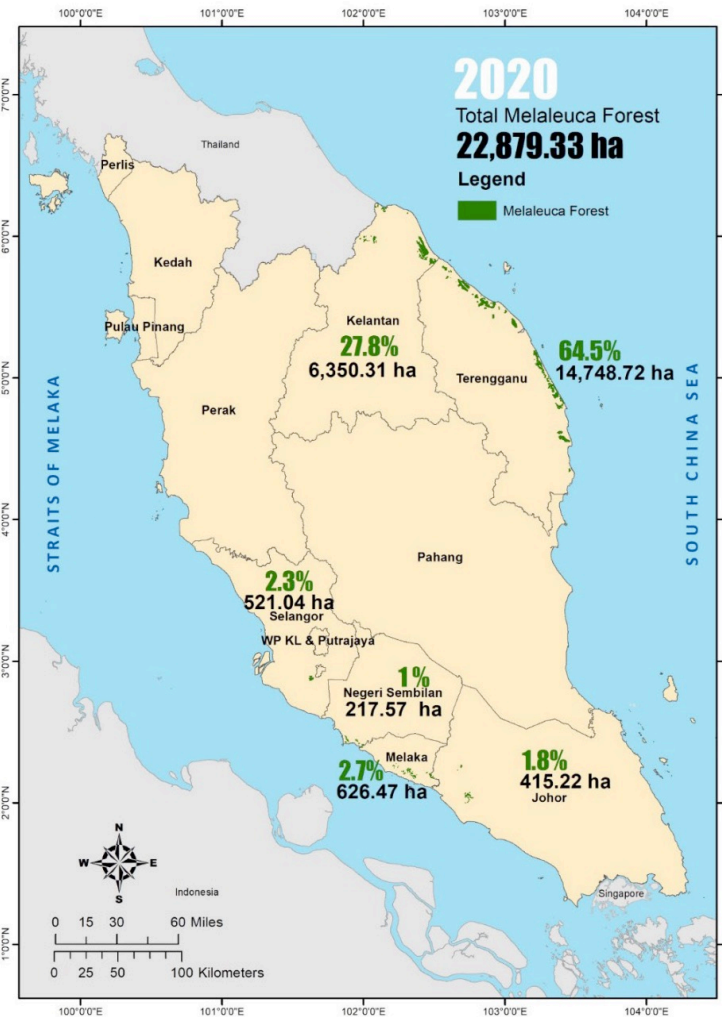
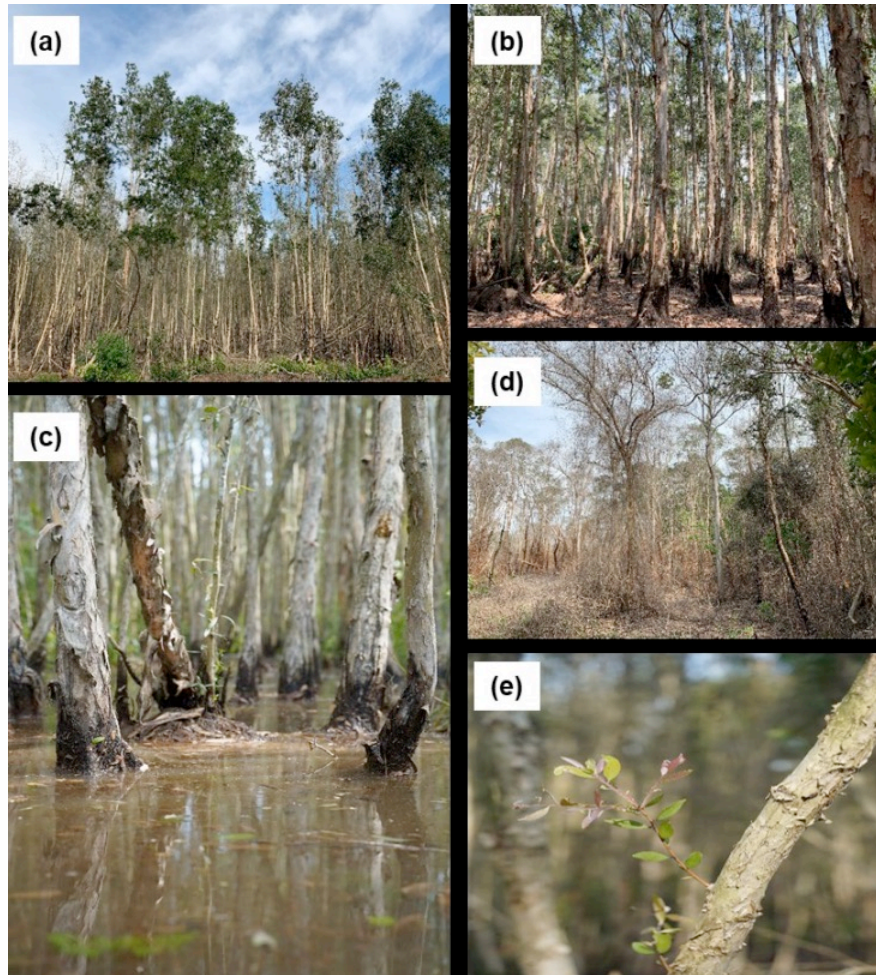


Max. Height of 12 m, DBH 35 cm
 Critically endangered species
 Occur only in Kanching

Source: Hamidah and Chua, 2021

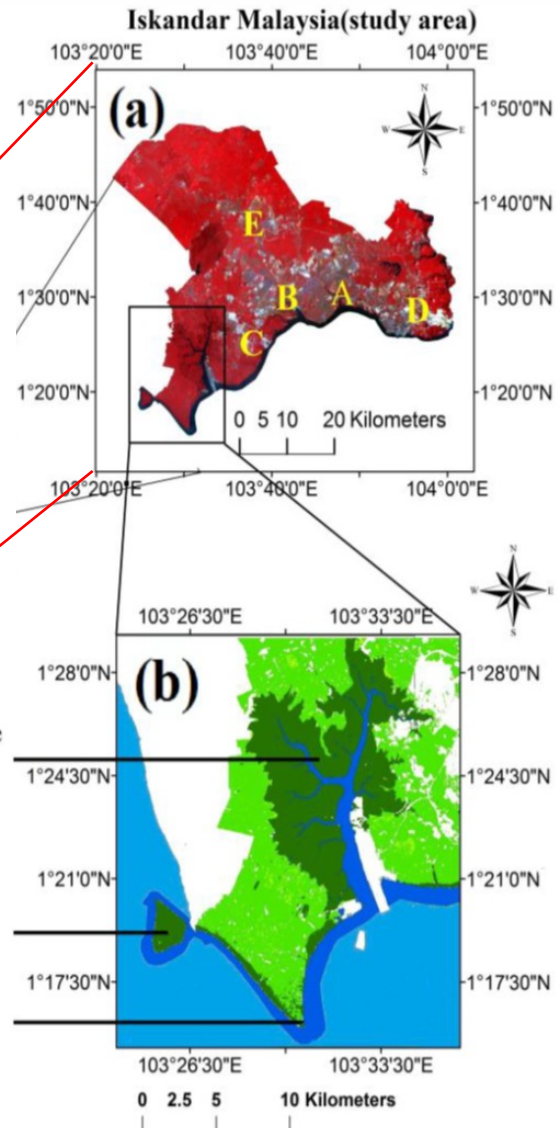
3D view of *H. subalata* in Compartments 2 and 14 of Kanching Forest Reserve, Selangor, Malaysia

Conservation of Melaleuca swamp forest



Source: Omar et al., 2020

Mapping forest cover extent- local scale



Source: Kanniah et al., 2015

Satellite Images for Monitoring Mangrove Cover Changes in a Fast Growing Economic Region in Southern Peninsular Malaysia

OPEN ACCESS

remote sensing

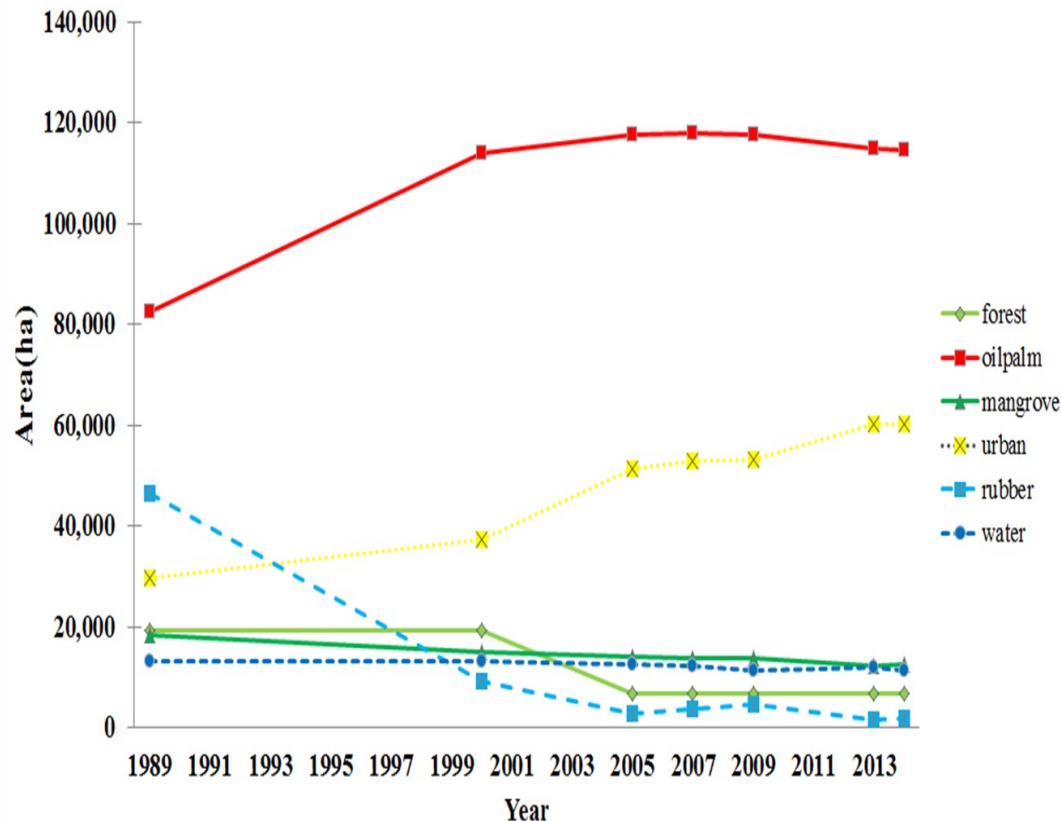
ISSN 2072-4292

www.mdpi.com/journal/remotesensing

Remote Sens. **2015**, *7*, 14360–14385; doi:10.3390/rs71114360

Kasturi Devi Kanniah ^{1,*}, Afsaneh Sheikhi ¹, Arthur P. Cracknell ², Hong Ching Goh ³, Kian Pang Tan ¹, Chin Siong Ho ⁴ and Fateen Nabilla Rasli ¹

- 65% reduction in forest from 1989 to 2000
- 33% Reduction between 1989 and 2014



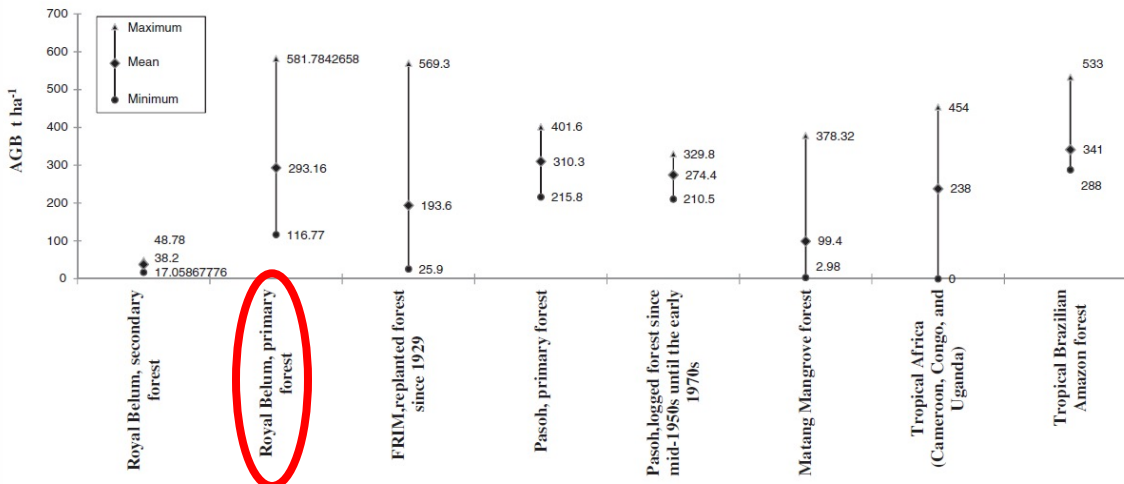
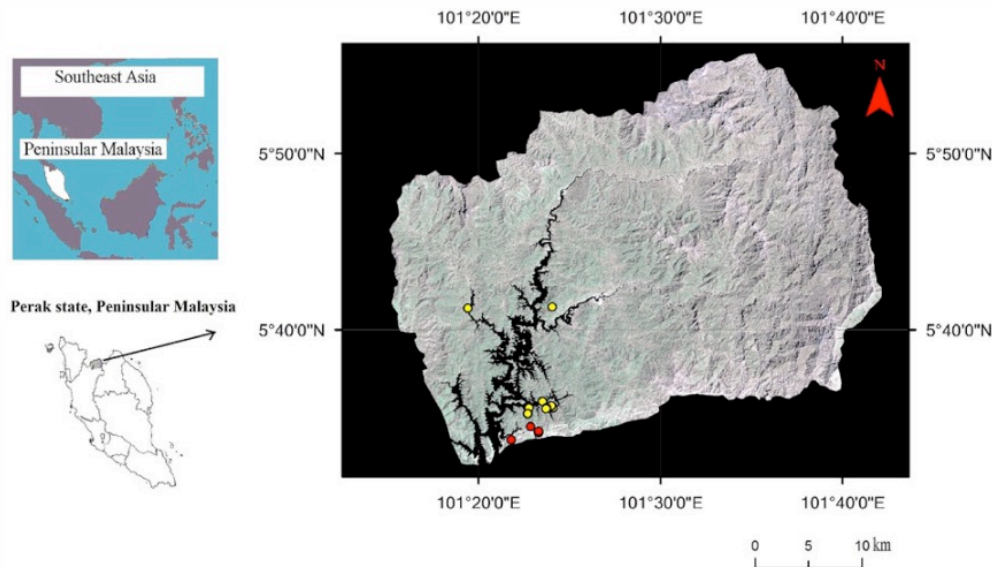
Mangrove Conservation action plans for Iskandar Malaysia

Action 10: Green and Blue Infrastructure and Rural Resources

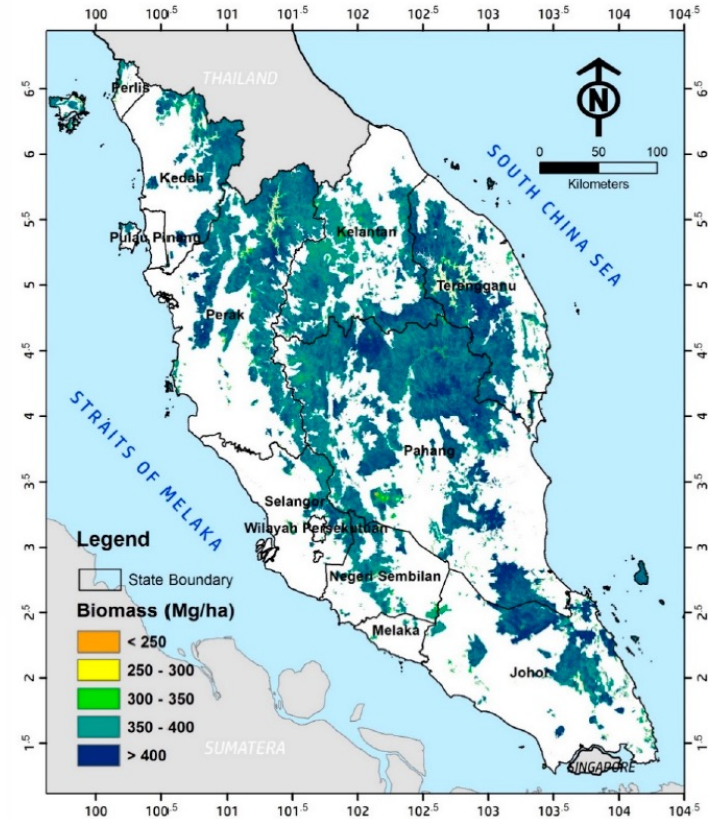
Sub-action: Conservation of Mangrove Forests

Measures	Programs
Reinforce protection of existing mangrove areas	1. Gazette all mangrove areas as protected forests
	2. Strict enforcement against illegal mangrove clearing
	3. Ongoing mangrove species audit
Mangrove area regeneration	1. Corporate sectors adoption of mangrove regeneration projects
	2. Involving students and schools in mangrove trees planting

Aboveground biomass of forests



Source: Kanniah et al., 2017

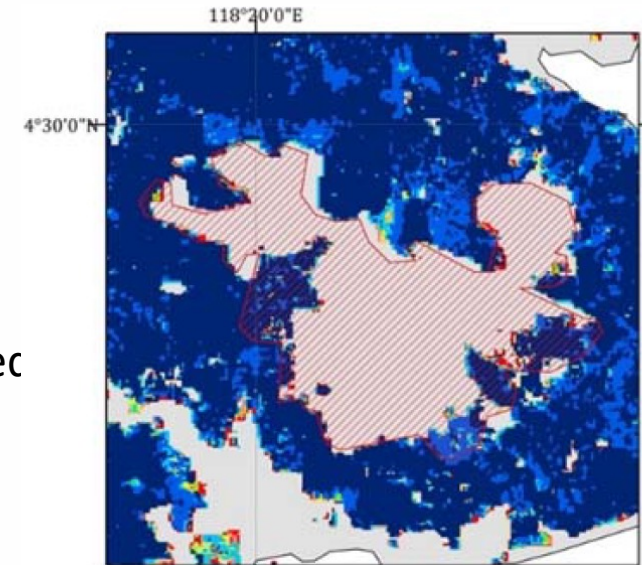


Source: Omar et al., 2017

Protected and conservation priority zones encroached by oil palm plantations

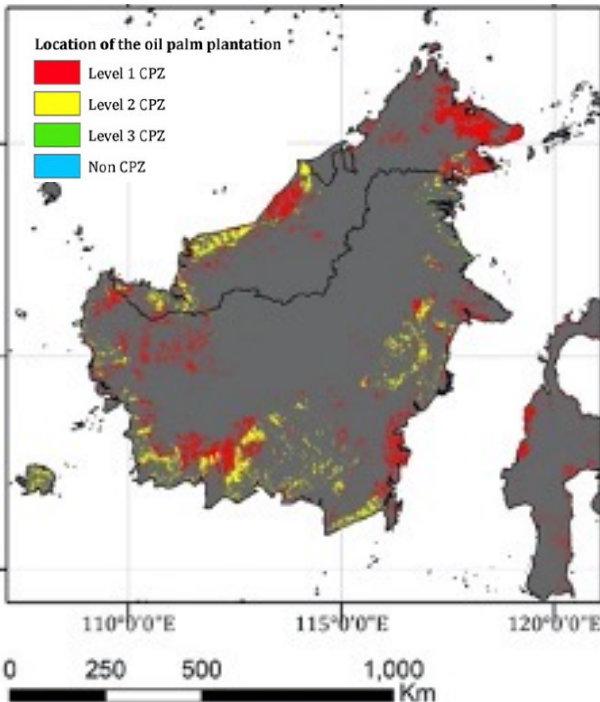
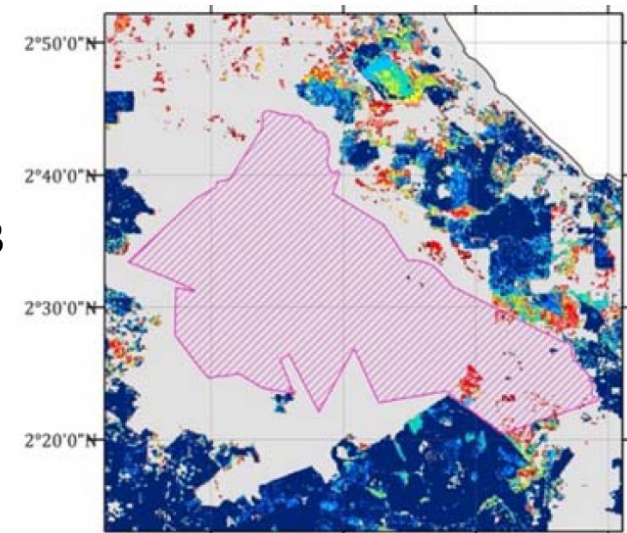
Category I

Mount Pock
Protection Forest
Reserve designated
in 1984



Category II

Endau Rompin
National Park
designated in 1993



Source: Leyu et al., 2021