



Extent of Forest Cover Change in West Mt. Bulanjao and Puerto Princesa Subterranean River National Park, Palawan

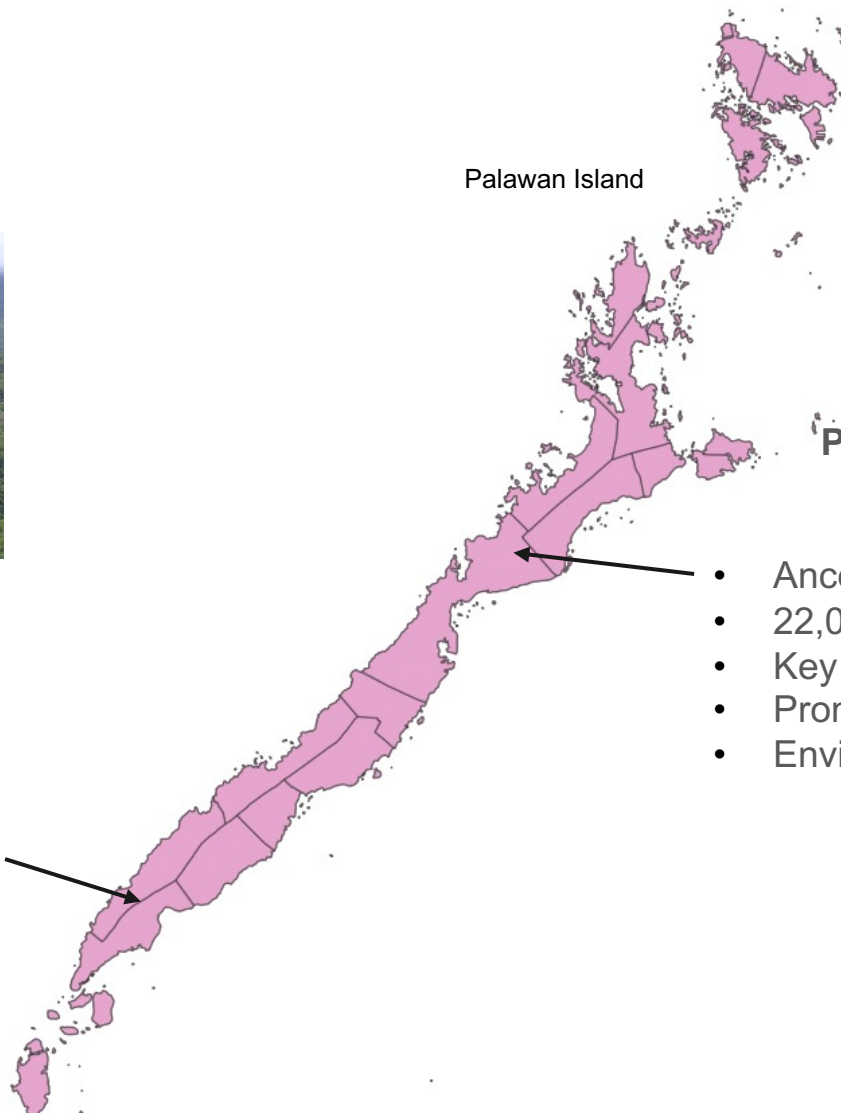
Jennica Paula Masigan¹, Angelica Kristina M. Jaojoco,
Kristine Joy Andaya, Jhonny Wyne Edaña, Oliver Coroza,
Edmund Leo Rico, and Neil Aldrin Mallari

¹Center for Conservation Innovation Ph Inc., Alabang, Muntinlupa City, Philippines
j.masigan@conservation-innovations.org



Mt. Bulanjao, Southern Palawan, Philippines

- Ancestral Domain of the Pala'wan Tribe
- Key Biodiversity Area, critical forest ecosystem
- Mineral Production Sharing Agreement (MPSA)
- Environmentally Critical Areas Network (ECAN)

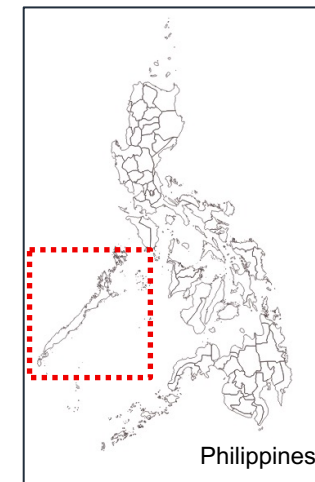


Palawan Island



Puerto Princesa Subterranean River Natural Park Puerto Princesa City, Palawan, Philippines

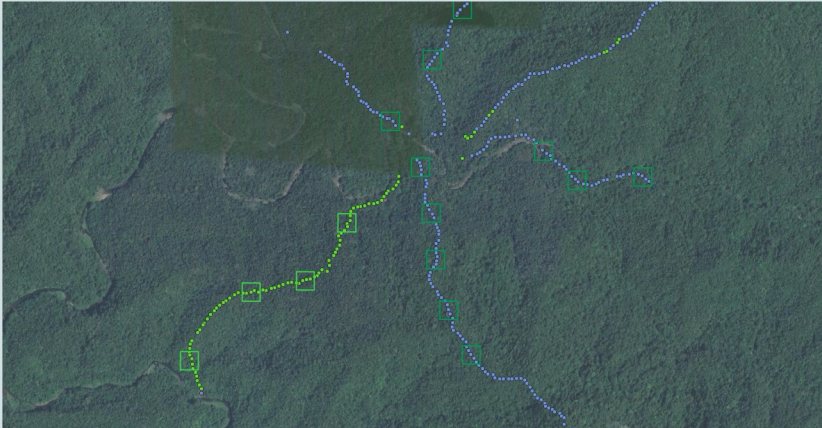
- Ancestral Domain of the Tagbanua and the Batak
- 22,064.17 ha Protected Area
- Key Biodiversity Area, World Heritage Site, Ramsar Site
- Prominent ecotourism destination
- Environmentally Critical Areas Network (ECAN)



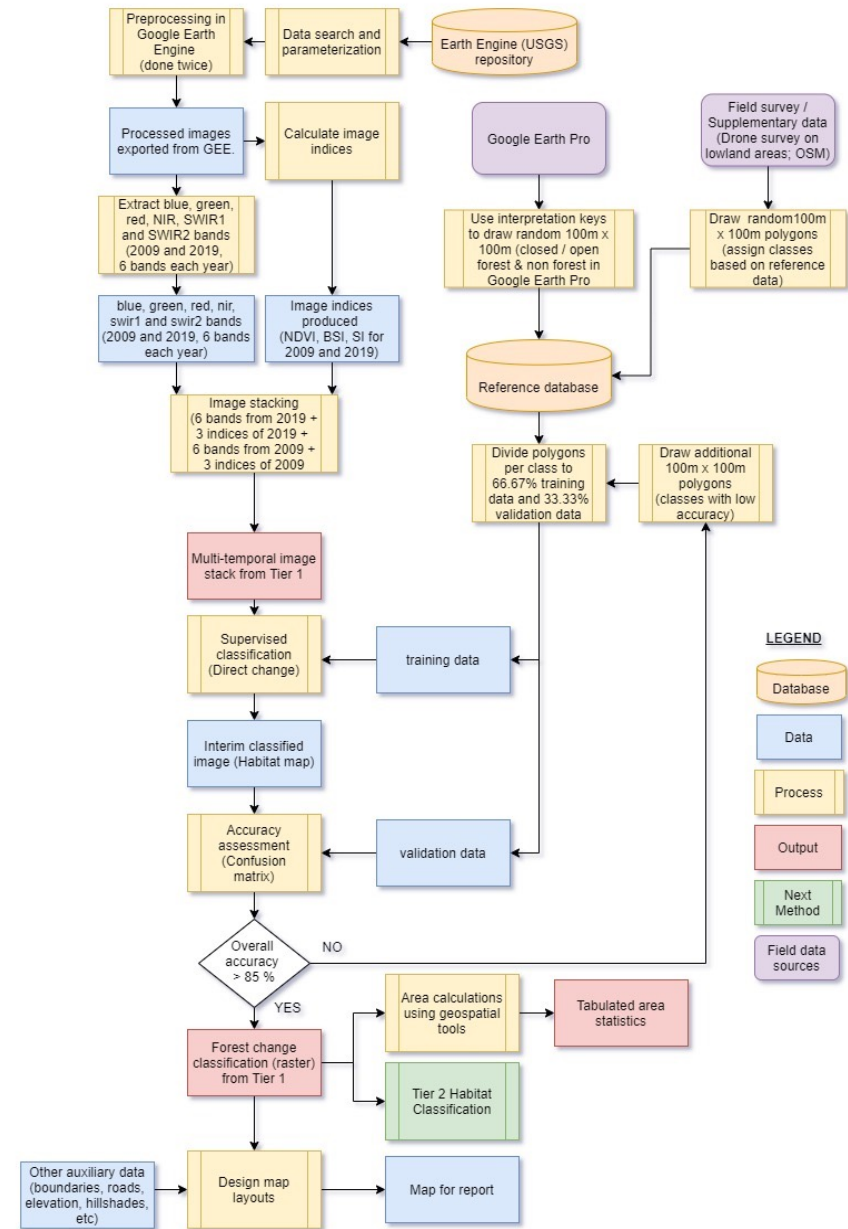
Philippines

SAMPLING DESIGN

- Ground truth survey, including foot patrols and drone sampling
- Focus Group Discussions and Key Informant Interviews
- Forest Change Detection Analysis

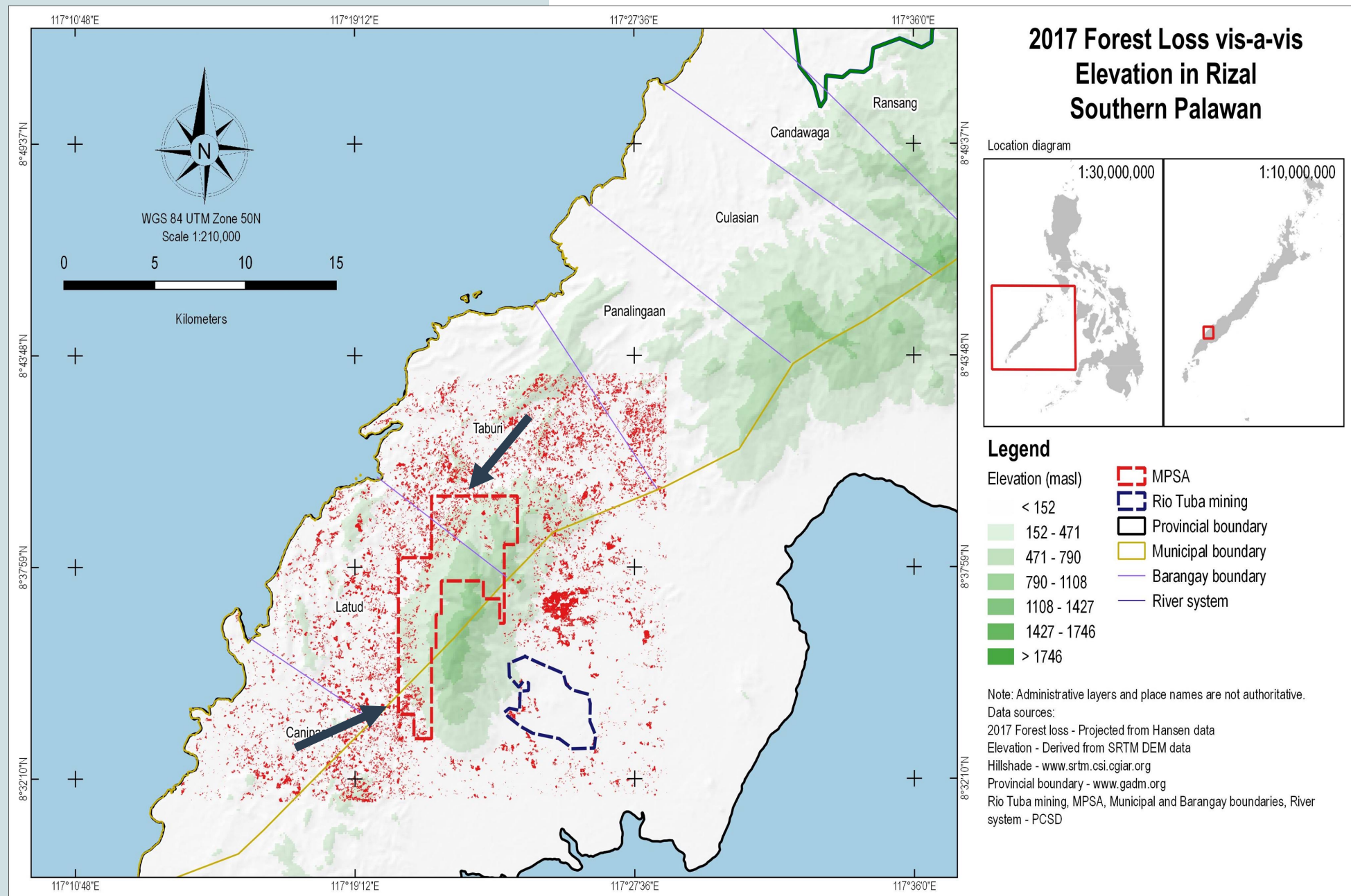


Example of reference plots drawn along the established transects lines from the Ground Truth Surveys.



RESULTS

Forest loss in Mt. Bulanjao is severe between 2000 and 2017

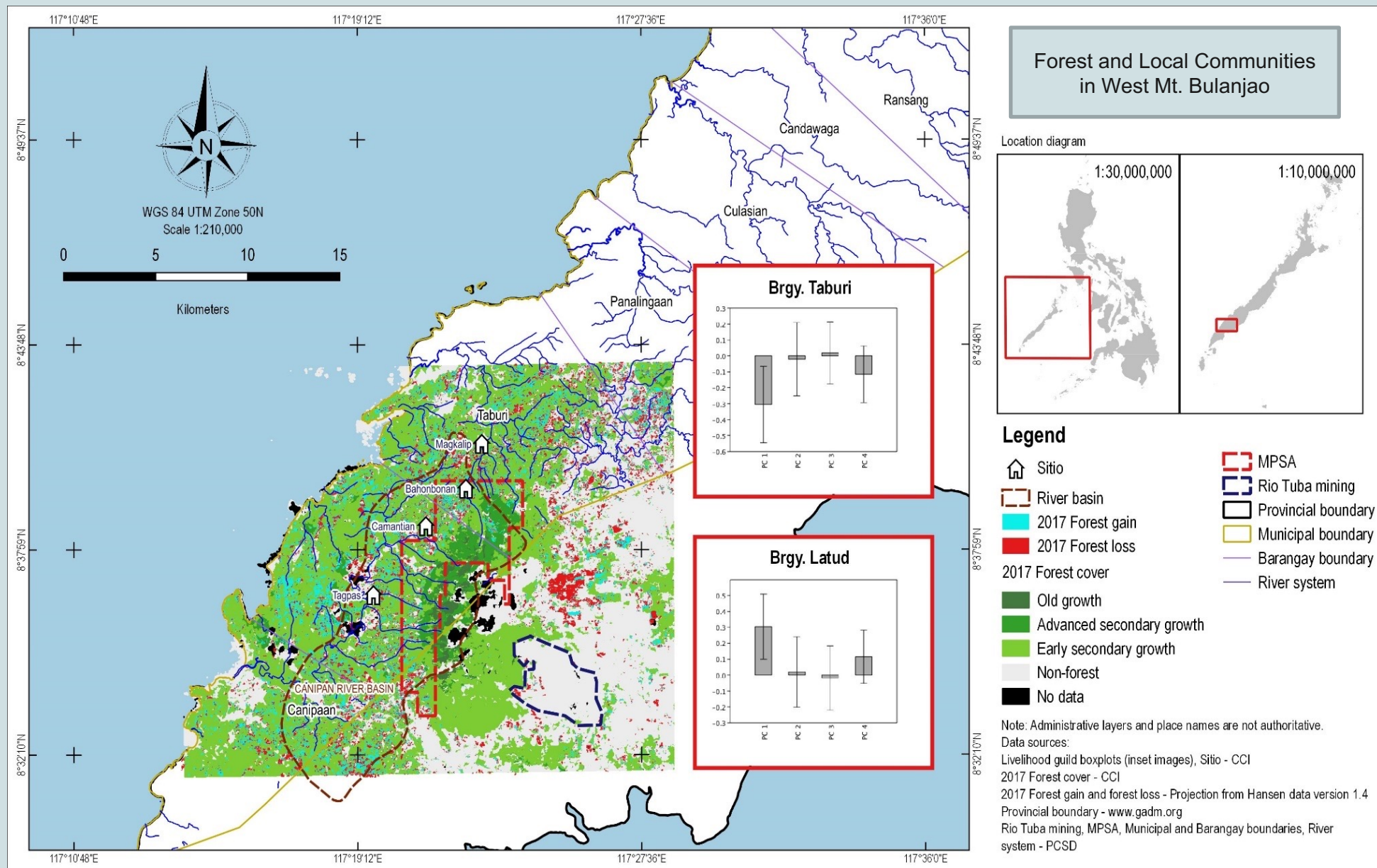


RESULTS

Communities in Mt. Bulanjao are highly dependent on forest resources



Aerial view of the land post-kaingin.



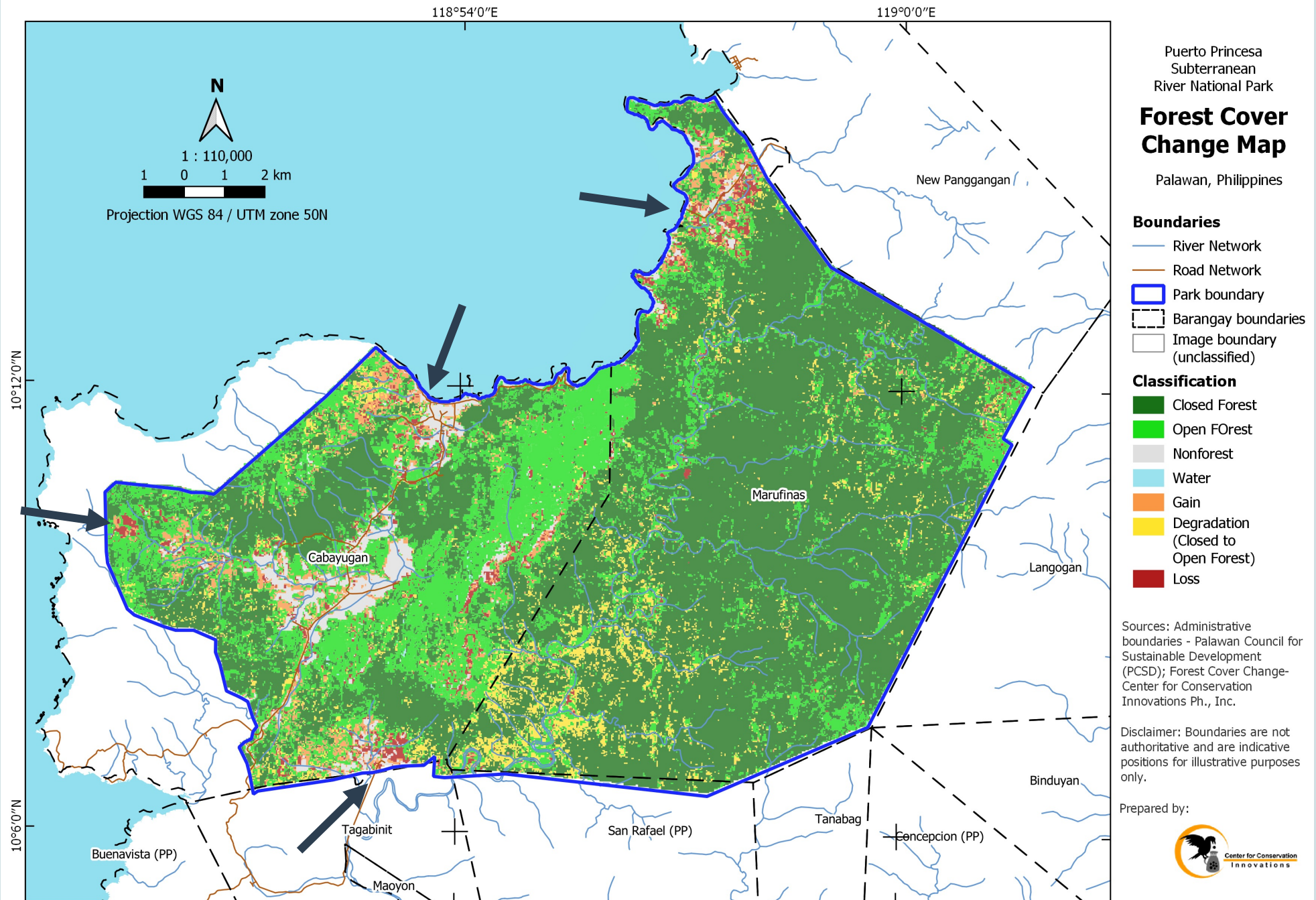
Forest cover change in Puerto Princesa Subterranean River National Park between 2009 and 2019

Forest loss: 821.22 ha

Forest gain: 732.07 ha

Degraded forests: 1,717 ha

PA size: 22,064.17 ha





Acknowledgements

- Puerto Princesa Subterranean River National Park management
- Protect Wildlife
- Palawan Council for Sustainable Development (PCSD)
- Conservation International (CI)
- Environmental Legal Assistance Center (ELAC)
- The Local Government of Puerto Princesa City
- The Local Government of Bataraza
- The Local Government of Rizal