

Mapping forest disturbances using Synthetic Aperture Radar (SAR) and Artificial intelligence (AI)

March 23, 2021

Ate Poortinga



SERVIR is a network of geospatial hubs located strategically across five regions of the World. SERVIR aims to increase use of geospatial information and technology for better development decision making.



'They never intended to conserve it': Outcry as loggers gut Cambodian reserve

BY ANDREW NACHEMSON ON 13 MAY 2020
Mongabay Series: Forest Trackers, Mekong Forest Trade

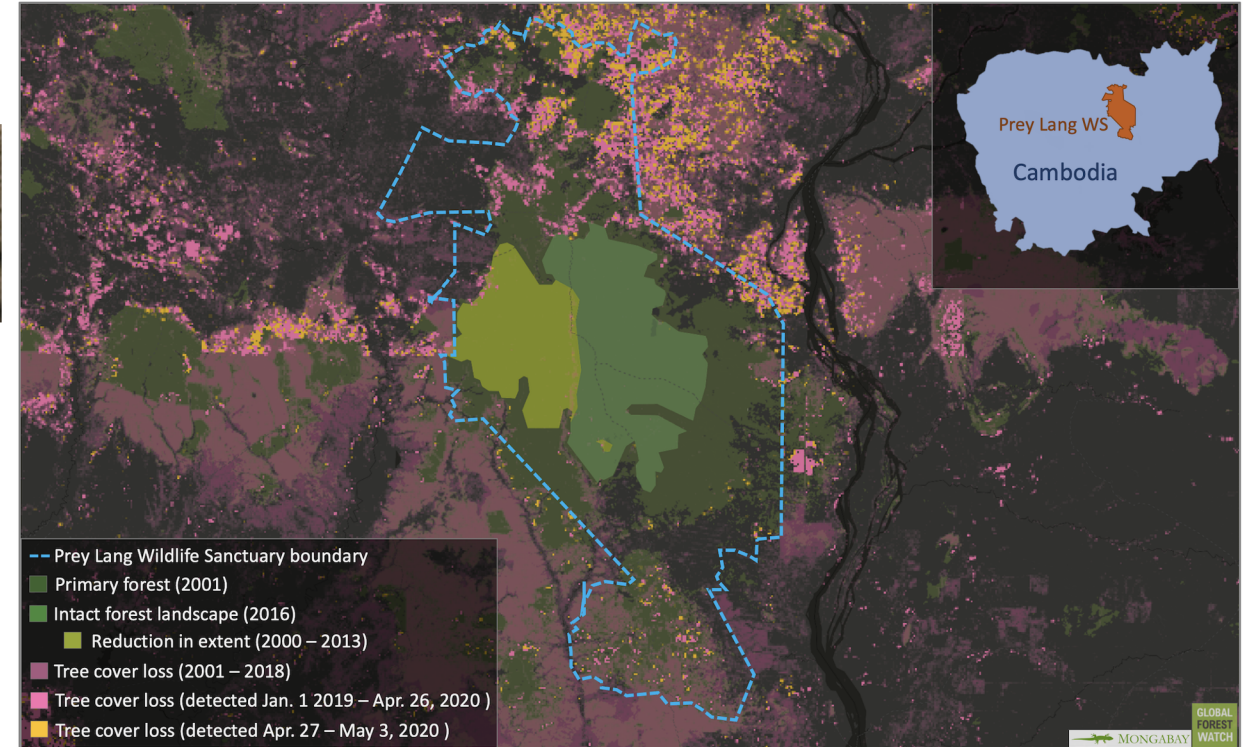
[link](#)

Cambodia: Widespread illegal logging in Prey Lang rainforest amid ban on community patrols

25 February 2021, 00:00 UTC

- *Prey Lang at grave risk, one year after environmental defenders were banned from patrolling wildlife sanctuary*
- *Authorities cancelled local communities' planned ceremony in Prey Lang today*
- *Proposed power line project threatens further deforestation*

[link](#)

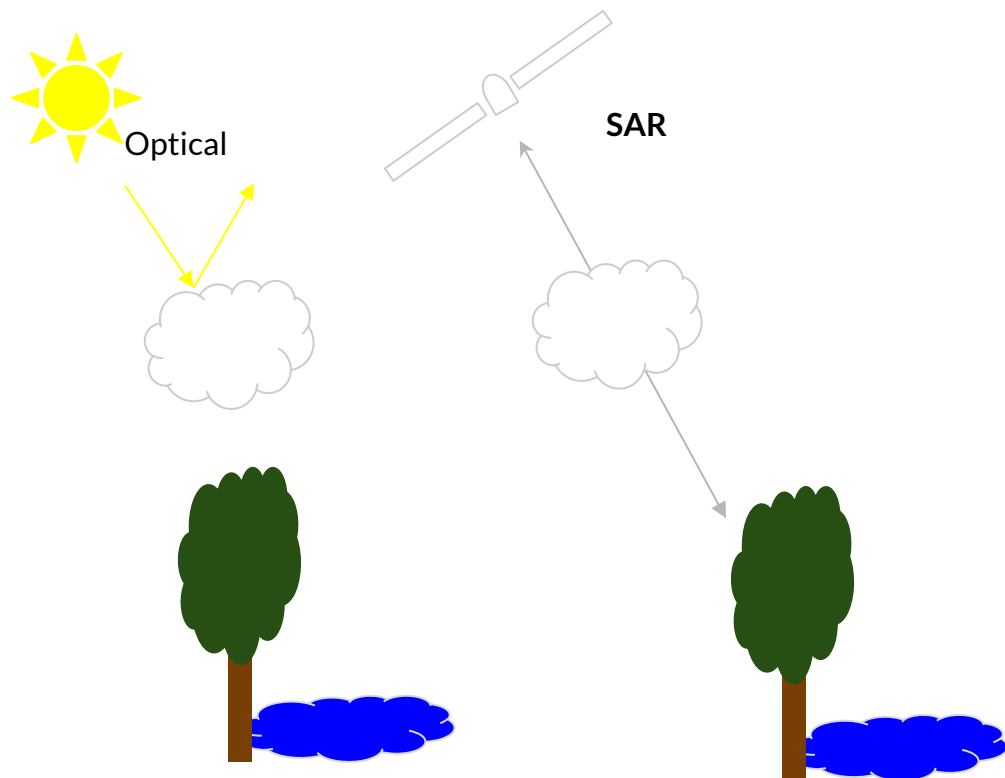


Problem:

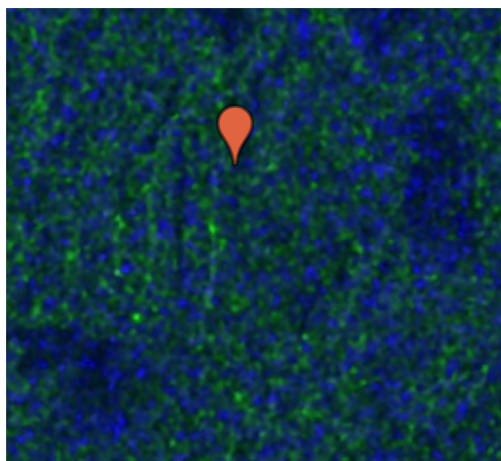
Satellite remote sensing can be extremely useful to map forest disturbances over vast areas. However, persistent cloud cover remains a major constraint in tropical regions.

Objective:

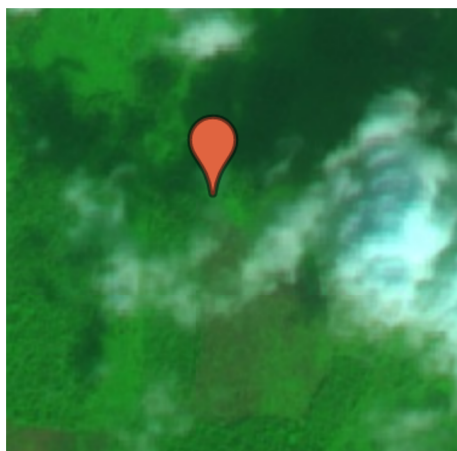
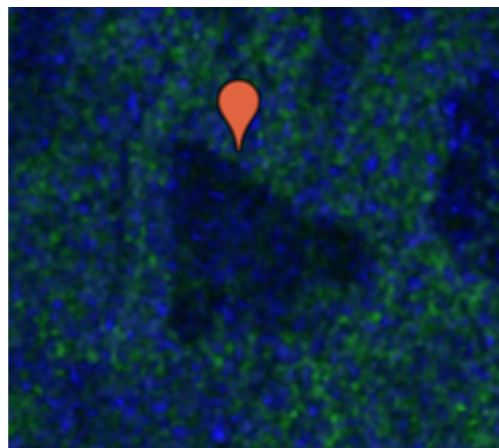
Determine forest disturbance hotspots using cloud penetrating radar technology in order to produce near real time information on forest loss.

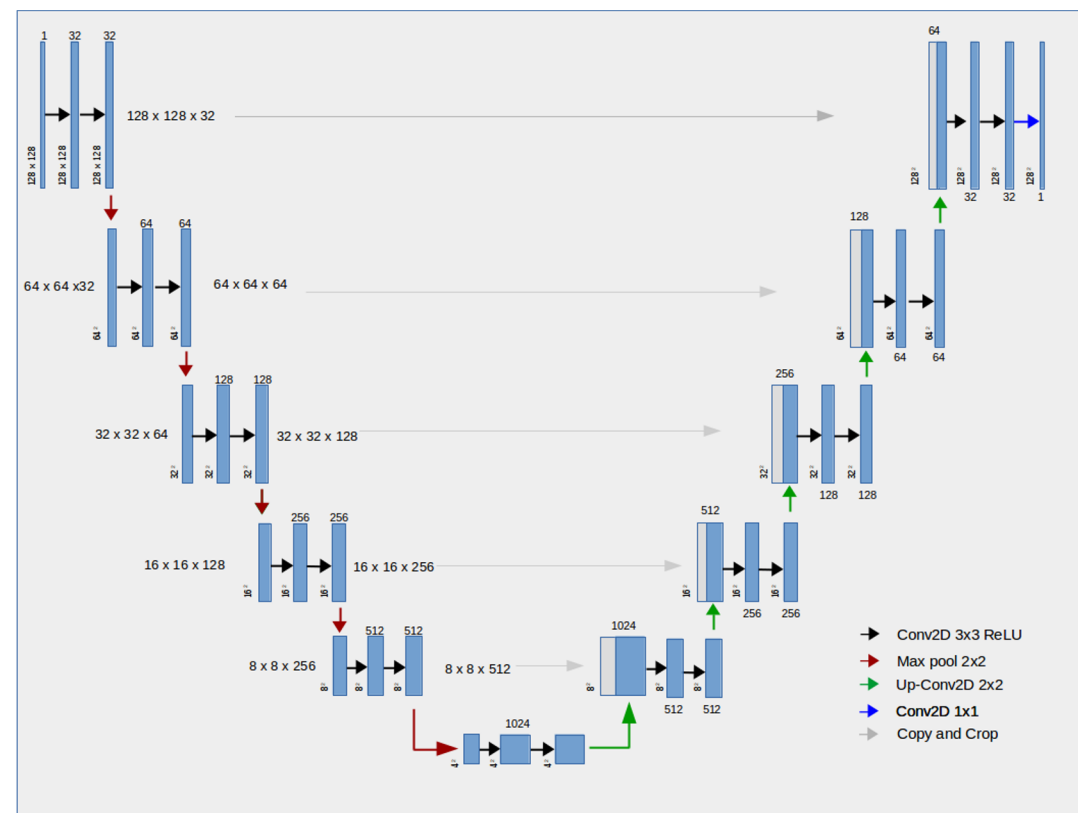
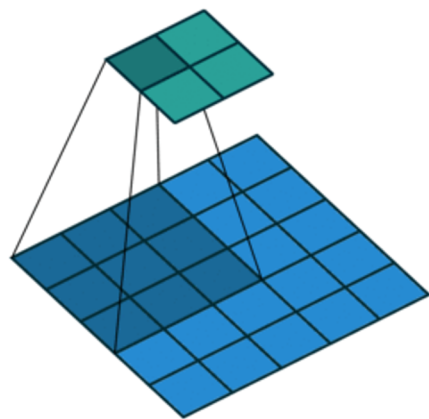
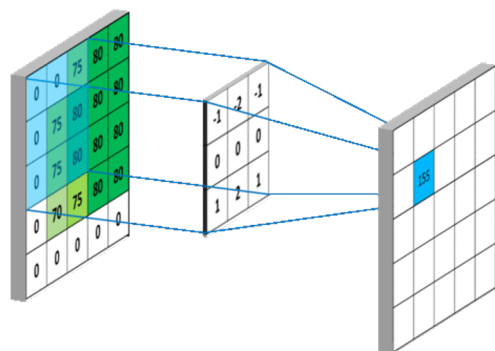


Before



After







USAID
FROM THE AMERICAN PEOPLE

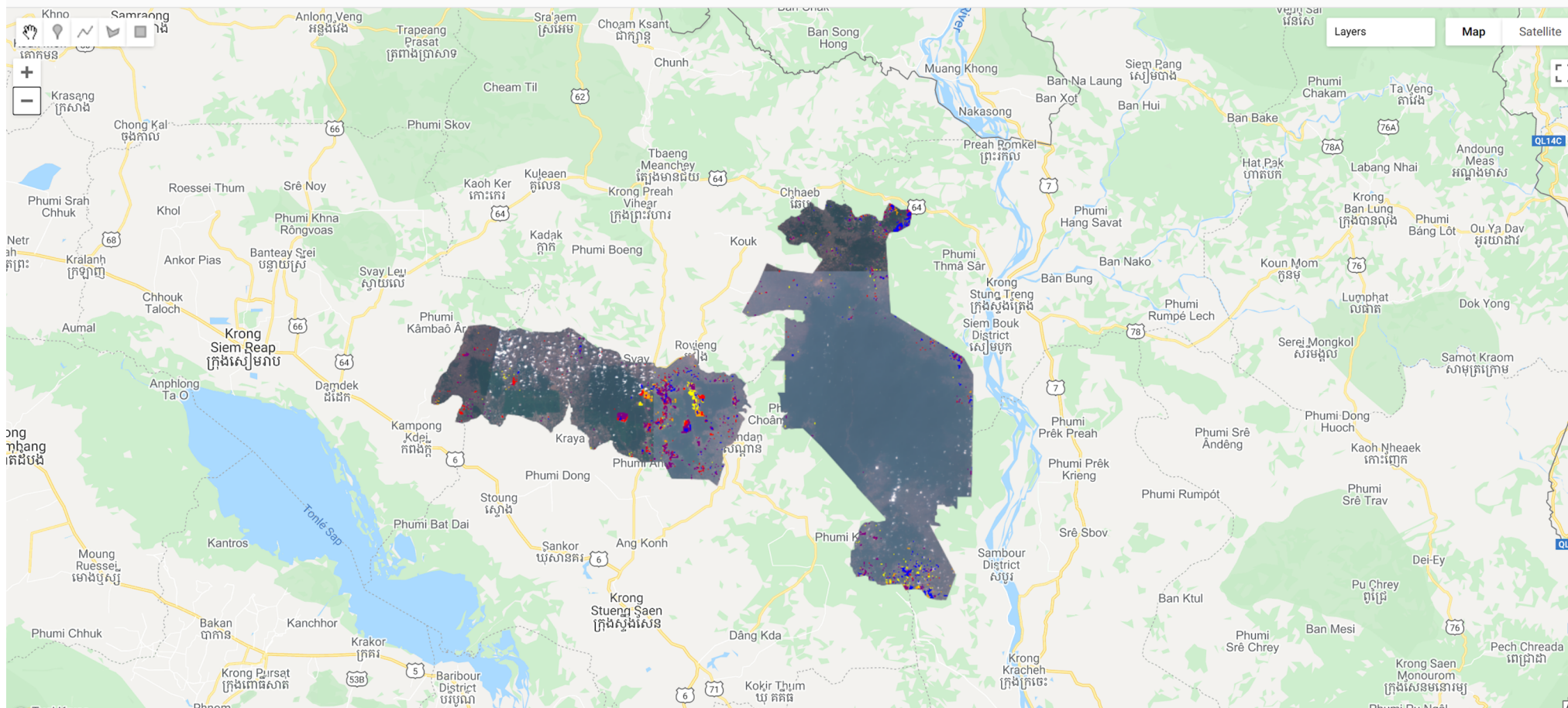


adpc

SERVIR  **MEKONG**

Earth Engine Apps Experimental

Search places



<https://servir-mekong.earthengine.app/view/forestalert>