

**Item 1**

**FTA's final 2020 POWB**

Doc 2

High-level work plan for the France support to FTA 2020-2021-2022

Approved by France and by the FTA Management team

Support to the Transformative Partnership Platform and Project on 'Documenting and Evaluating the Socio-Economic Viability of Agroecological Practices Across Africa'

The French support to FTA will be directed (for approximately 10% of the amount) to the supporting the Transformative Partnership Platform on agroecological approaches to building resilience of livelihoods and landscapes, its secretariat, governance and core functions and outputs. The biggest part (approx. 90%) of the funds will support the TPP's first research priority to be addressed by is documenting and evaluating the socio-economic viability of agroecological practices across Africa. The TPP and this first project is co-ordinated by the agroecology research priority of the CGIAR programme on Forests, Trees and Agroforestry (FTA) of which CIRAD is a managing partner. The TPP has a specific governance and management structure as currently co-designed by its founding partners. The overall functions of the TPP are described in its concept note. The TPP will integrate some projects in full (such as the viability study): these are projects whose design and development are conceived from inception as to fulfil the TPP's objectives. The TPP will also build linkages with other projects "aligned" to it, that can make important contributions to the objectives of the TPP, as well as establish important linkages with other initiatives.

**Aim**

The overall objective of this call is to better understand the socio-economic viability of agroecological practices and their livelihood system impacts across environmental and demographic gradients in Africa. This is a scientific and methodological challenge because of the lack of a clear set of metrics able to document all the dimensions of this viability over time. The intention is to conduct an holistic evaluation including:

1. The quantitative and qualitative assessment of the labour (e.g. workload, employment, arduousness, skill level, meaningfulness) required by agroecological practices;
2. Income (including returns to labour) and food security outcomes for households with contrasted access to: income sources (non-farm and off-farm), markets and policy incentives;
3. Intra household levers and lock-ins (in terms of access to knowledge, land tenure, gender, risk aversion, religion and age equity); and
4. The economic value of ecosystem services and disservices relevant to the location of the case studies (this may include provisioning, regulating and cultural services).

### Scope

The study will focus on the field to farm and household scales. Assessments at value chain or regional scales are beyond the scope of this specific call, but possible connections and interfaces with other work on socio-economic assessment of value chains and landscapes or territories will be welcome.

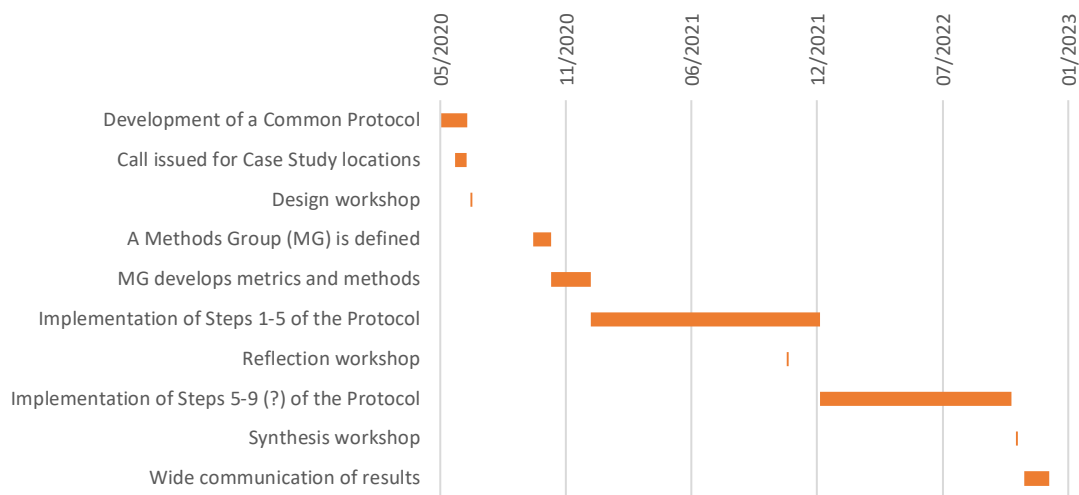
### Modality

the study will be realized through a competitive call for selecting a set of case studies in Africa involving CGIAR and/or French teams and their partners. A three step process will be developed over three years:

1. Selection of case studies and protocol definition,
2. Implementation and reflection; and
3. Analysis across cases studies and synthesis of lessons learnt. This process aims to ensure complementarity and pertinence of the case studies and an efficient analysis across different agroecological practices and economic impacts. Results will be discussed with key policy makers and widely disseminated, including through high impact scientific publications, policy briefs and a series of high profile events to share key messages emerging from the analysis.

### Schedule of activity

1. **Development of a Common Protocol.** Core group develops a paper setting out the initial scope of the evaluation, the methods and metrics to be used and a draft protocol for conducting the evaluation.
2. **A call is issued for case study locations** where the protocol could be implemented. The intention here is to generate data from locations where partners already have active agroecology programmes in different agroecological zones.
3. A **design workshop** is conducted to consolidate methods and protocol, select the range of case study locations to be included in the evaluation, discuss and ensure adequate resources for implementing the protocol at each location and establishing a timeline for data collection.
4. **First round implementation of protocol** at case study locations supported by the core methodological development group to ensure consistency.
5. **Synthesis workshop** to collate data and perform cross-case analysis of data and experience.
6. **Wide communication and discussion of results** with key policy makers including first class scientific publication and series of high profile events to share key messages emerging from the analysis.



**Provisional Case Study teams (draft as of 4 November 2020)**

Lead Institution	Country	Proposal Title
Sustainable Agriculture Tanzania	Tanzania	Agroecology Centre in Tanzania
CIRAD-ILRI	Senegal	The agroecological impacts of agro-pastoral and pastoral systems in Senegal
CIRAD	Burkina Faso	Agro-sylvo-pastoral farming systems in Burkina Faso
CIRAD-ICARDA	Tunisia	Compost production and the integration of livestock and crop production in Tunisia.
CIRAD-IRD	Madagascar	A comparison of conservation agriculture, agroforestry systems, crop-livestock integration in Madagascar.
CIMMYT	Ethiopia Zimbabwe	Farm mechanization in Ethiopia and Zimbabwe.
ICARDA	Ethiopia	

		Inter and intra-household impact of food legume production on technical efficiency, income and agroecological transformation in Ethiopia.
ICRAF	Burkina Faso	Tree-crop associations and improved biomass production in Burkina Faso.
ICRAF	Kenya	Soil and water conservation and agroforestry options in Kenya.
IWMI	Ethiopia	Exclosures for landscape restoration in Ethiopia.
Cornell University	Malawi	Promoting a wide range of agroecological practices in Malawi.
The Alliance of Bioversity International and CIAT	Kenya	Agroecological practices to diversify and improve nutrition in farming systems in Kenya through seed banks.

### **Indicative use of the funds**

The total budget to FTA amounts to €4m over 3 years and will provide funding for both the Viability Study and the TPP Secretariat. The funding allocated to the TPP Secretariat will contribute to the co-ordination, synthesis and communication across projects within the TPP and will also include managing the platform itself.

The breakdown below shows the allocation of USD\$ 1,423,000 received from the CGIAR Trust fund as France W2 for the first year. The second and third years are anticipated to have the same basic allocations.

The allocation is expected to be as follows pending agreements with Case Study proponents:

<b>Allocations (Year 1)</b>	<b>Amount (USD\$)</b>
Case studies	900,000
Secretariat	153,000
Protocol development and synthesis	370,000
<b>Total</b>	<b>1,423,000</b>

### **Detailed allocations**

#### Secretariat

<b>Allocation</b>	<b>Amount (USD\$)</b>
GLFx (CIFOR)	75,900

Secretariat lead (ICRAF)	45,430
Operational costs (ICRAF)	31,670
<b>Total</b>	<b>153,000</b>

Protocol development and synthesis:

<b>Allocation</b>	<b>Amount (USD\$)</b>
GLFx (CIFOR)	68,278
Stats4sd (through ICRAF)	40,000
Cornell (through ICRAF)	20,000
ICRAF	120,861
CIRAD	120,861
<b>Total</b>	<b>370,000</b>

Case studies

The putative allocation for Case Studies is as follows (USD\$75,000 per Case Study) – this is indicative and may change as ultimate funding for a specific case study will depend on its size and existence of co-funding the case being.

<b>Case Study proponents</b>	<b>Amount (USD\$)</b>
CIRAD (x4)	300,000
ICRAF (x2)	150,000
University of Cornell (through ICRAF)	75,000
Sustainable Agriculture Tanzania (through ICRAF)	75,000
Bioversity	75,000
IWMI (through ICRAF)	75,000
CIMMYT (through ICRAF)	75,000
ICARDA (through ICRAF)	75,000
<b>Total</b>	<b>900,000</b>