

What indicators to assess the contributions of forests, trees, and agroforestry to food security and nutrition at national level?

Gitz V.^(a), Taber A.^(b), Sunderland T.^{(a)(c)}, Ickowitz A.^(a), McMullin S.^(d), Meybeck A.^(a), Jamnadass R.^(d), Pingault N.^(a), Jin S. L.^(b)

(a) CIFOR, Bogor, Indonesia; (b) FAO, Rome, Italy; (c) University of British Columbia (UBC) Vancouver, Canada; (d) ICRAF, Nairobi, Kenya

Forest, trees and agroforestry provide multiple contributions to Food Security and Nutrition (FSN) in its 4 dimensions

Availability
Utilization

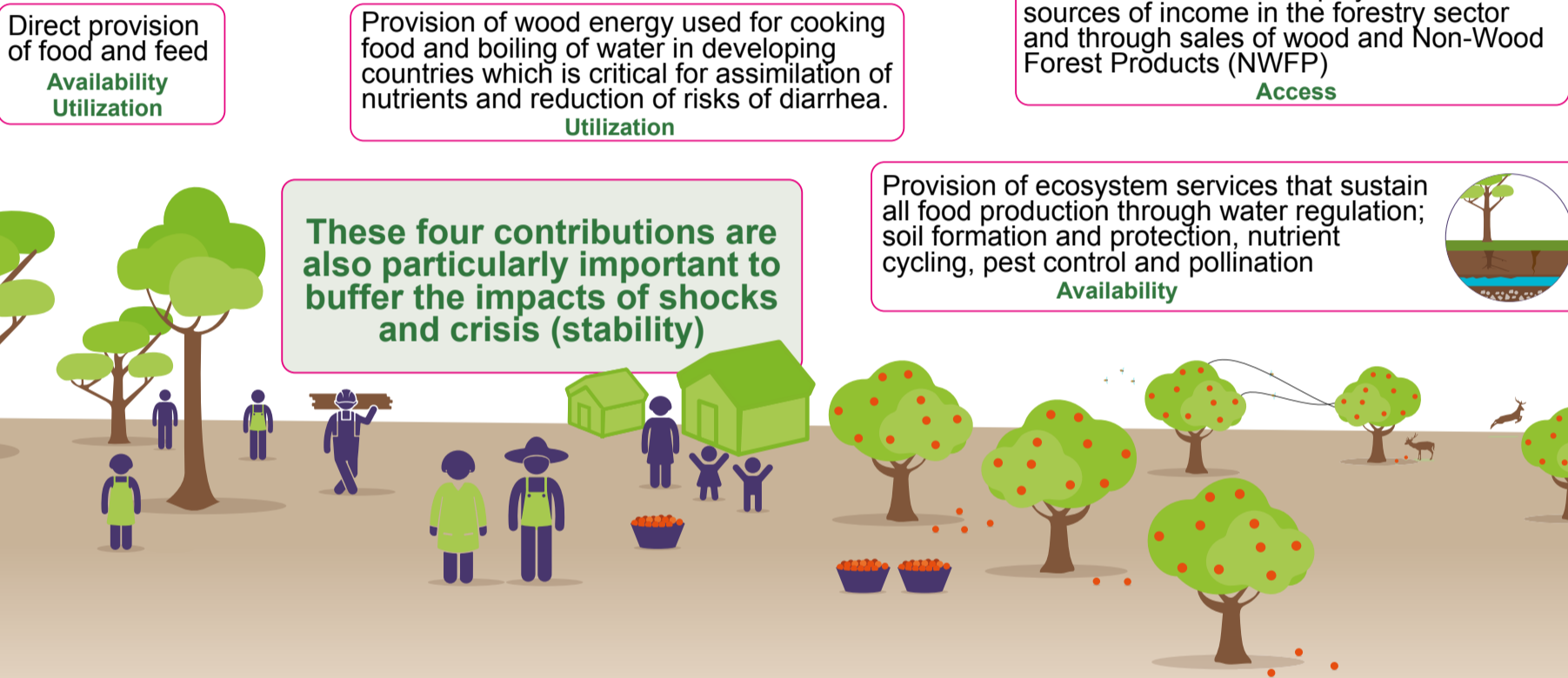
Access
Stability



The GFEP report (2015) and the High Level Panel of Experts on food security and nutrition' report (HLPE, 2017) played a considerable role in describing the contributions of forests, trees and agroforestry to FSN and have raised awareness on their importance in both the forestry and food security and nutrition communities.

However, there is currently no quantitative indicator to assess these contributions at national level

We consider the four main contributions of forests, trees and agroforestry identified by the HLPE to FSN and link them to the four dimensions of FSN:



They have effect at various scales, from local to global. As no single indicator can track at national level these four contributions, we propose to use a set of sub-indicators, using data already available for all countries:

- **Employment** provided by forests and trees, covering forestry, wood transformation and related sectors **FAO-ILO**
- **Woodfuel** annual consumption (kg per capita) **FAOSTAT**
- **Fruits** (or only of fruits from trees) annual consumption (kg per capita) **FAO, Food balance Sheets**
- **Nuts** annual consumption (kg per capita) **FAO, Food balance Sheets**
- **The contribution of ecosystem services provided by forests and trees to agricultural production and livelihoods** → *Several options have been mentioned such as the number or percentage of farming households deriving benefits from forests and trees, that could be informed by a qualitative question in agricultural census and comparable surveys, or indicators linked to forest proximity indexes and/or to riparian strip tree coverage indexes.*

Indicator	Availability	Access	Utilization	Stability
Employment in forestry		Provides income that can be used to buy food		Often a buffering function in times of needs
Woodfuel consumption		important source of income especially for the most vulnerable	Used for cooking by 2,4 billion people and also for boiling water	Often an activity providing income in times of need
Fruit consumption	Forests and Trees provide more than half of fruits at global level		A key source of nutrients	
Nut consumption	Trees provide all nuts		key sources of healthy fats, protein & micronutrients	
% age of farming households having part of their livelihood coming from trees or forests (or other comparable agreed indicator)	Reflects diverse contributions of ecosystems to agricultural production (including products that are sources of important nutrients) and households	Contribution of forests trees and agroforestry to livelihoods Source of income		An indicator of the buffering role of forests and trees

Additional proposals

Strengthen the collection of data on NWFP in the FRA.

Integrating the contribution of wild foods in agriculture census data collection, including through the possibility of having optional answers covering products of importance for balanced diets at subnational level.

Addition of a few questions in agriculture censuses to try to capture farmers' perceptions of a range of ecosystem services from forests and trees.

These proposals have been discussed during the Expert Workshop in support of the CPF Joint Initiative on streamlining forest related reporting. It was decided to create a specific work stream that would finalize the first set of sub-indicators in a concrete and practical way, for quick use and to further explore options to better cover ecosystem services that support agricultural production as well as the specific contribution of wild foods to the FSN of people living close to forests (CPF, 2019).

References
 HLPE. 2017. *Sustainable forestry for food security and nutrition. A report by the High-Level Panel of Experts on Food Security and Nutrition of the Committee on World Food Security*. Rome. Vira, B., Wildburger, C. & Mansourian, S. (eds). 2015. *Forests, trees and landscapes for food security and nutrition*. IUFRO World Series. 33.
 UNDESA. 2019. *Global forest goals and targets of the UN strategic plan for forests 2030*. United Nations, New York, April 2019.
 CPF. 2019. *Co-Chairs Summary Report. Expert Workshop in support of the CPF Joint Initiative on streamlining forest related reporting: Strengthening the Global Core Set of Forest-related Indicators to support the implementation of the 2030 Agenda and the UN Strategic Plan for Forests*. Rome, 22 - 24 October 2019. Sponsored by the Collaborative Partnership on Forests.

