

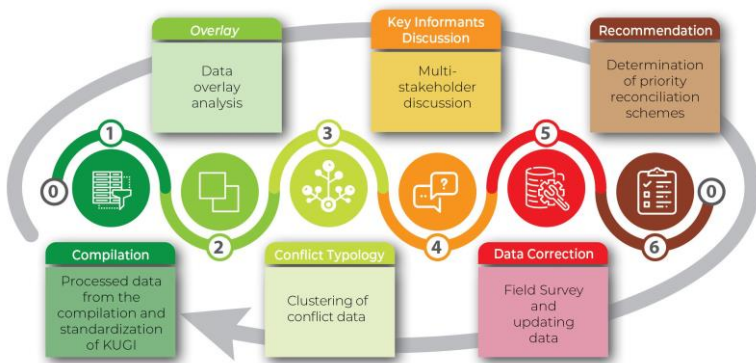
# Strengthening participatory process of reconciling forest, agriculture and other land uses data at the local level in Indonesia

Asri Joni\*, Harry A., M. Nugraha, M. Zulkarnain, Arga P., Feri J., Andree E.

\*a.joni@cgiar.org - Land Use Policy Researcher

## The motives

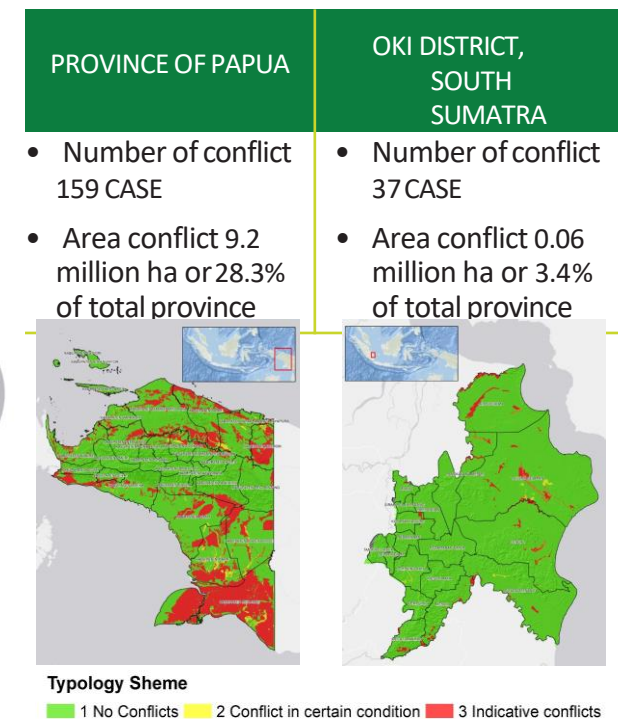
- Inaccuracy and inconsistency of the data on the land use planning process are always considered as the core problem of data conflict in Indonesia. It is consequently causing more conflict in data on land use planning.
- We use participatory process with all stakeholders with main objectives are data, analysis, diagnostic and recommendation on data reconciliation produced through inclusive and informed processes and communicated to key decision makers at provinces and targeted districts.



Framework strengthening participatory process for reconciling conflict data

## Identification of geospatial data inconsistency

Inconformity of references is a state where reference data is used as a based data then found mismatch with other base data. Inconformity of function is a condition where second layer data or land use data will be addressed as permits data was found In conflict among permit even with reference data.



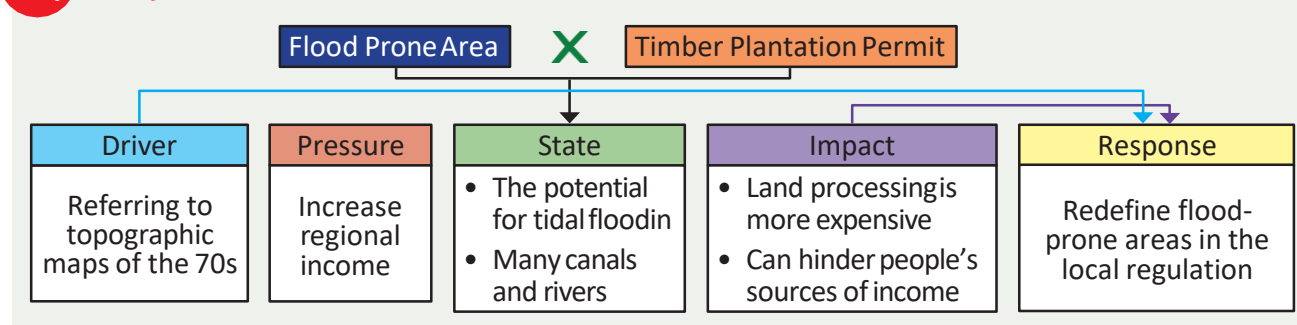
## Key findings

- Local government needs comprehensive resources and guidelines in order to fulfill national target
- Drivers that causing repetition of data conflicts were Data does not comply with Standard and lack of participatory in produce data
- Technical Assistance by expert is needed to help GoI achieved their target in reconciling conflicts
- Strengthening participatory process of reconciling forest, agriculture and other land uses data is urgently required
- Even the cause of conflict similar but the reconciliation scheme may varies

## Typology of conflicts

Typology of Data Conflict is grouping according to the character of a problem of each data. Conflict types refer to the data function table in the filter step. If there is a collision between data that is not in accordance with its function, then that is the data that is considered to be conflicting. The function reference table already refers to the regulations and understanding of the respective regions or the terms according to the local context because each region has it's own uniqueness in utilizing space.

## Key informants discussion



## Recommendation schemes

Drivers	Reference	Permits	Area	Reconciliation Scheme
Data does not comply with standard	Flood-prone area	Timber plantation	OKI	Judicial Review Land-use Planning: Redefine flood prone areas in the local regulation, because the OKI is indeed a waterarea
Data does not comply with standard	Production forest	Oil palm plantation	Papua	<ul style="list-style-type: none"> <li>Judicial Review Permit Allocation: Correction of permit boundaries</li> <li>The licensing agency pays more details to the requirements in issuing permits</li> </ul>

Some of the drivers conflict might be similar, i.e unstandardized data, lack of coordination, but the reconciliation scheme may varies. the local context must be considered in develop reconciliation. For example: Flood-prone area was protected by law and forbidden for any kind activities instead of protection. However, area study was in lowland and affected by a tidal wave. They aware now that their area has gifted as water area, so what they have to do is to redefine flood-prone areas in the existing local regulation so the development and welfare of people will be growth. If there are hundreds of recommendations that have been produced, then a priority scale is determined to be completed first in the timebound.

